



CAAC Design and Construction Update

10-20-2022



2022 Projects

New Buildings & Additions

Marshdale ES - Replacement HCM – GC GH Phipps

Construction

Move-in Oct 24



Marshdale ES - Replacement HCM – GC GH Phipps

Construction



Marshdale ES - Replacement HCM – GC GH Phipps

Construction



Marshdale ES - Replacement HCM – GC GH Phipps

Construction



Marshdale ES - Replacement HCM – GC GH Phipps

Construction



Marshdale ES - Replacement HCM – GC GH Phipps

Construction



Marshdale ES - Replacement HCM – GC GH Phipps

Construction



Jeffco Open - Auditorium Addition HCM - Bassett

Construction



Jeffco Open - Auditorium Addition HCM - Bassett

Construction



Jeffco Open - Auditorium Addition HCM - Bassett

Construction



Prospect Valley ES - Replacement MOA – GH Phipps

Construction
Move-In Jan 5 2023



Prospect Valley ES - Replacement MOA – GH Phipps

Construction



Prospect Valley ES - Replacement MOA – GH Phipps

Construction



Prospect Valley ES - Replacement MOA – GH Phipps

Construction



Prospect Valley ES - Replacement MOA – GH Phipps

Construction



Standley Lake HS – Aux Gym Addition Cannon – FCI Constructors

Construction



Standley Lake HS - Aux Gym Addition Cannon – FCI Constructors

Construction



Ralston Valley HS 10 Additional Classrooms EUA - Himmelman



Ralston Valley HS
10 Additional Classrooms
EUA - Himmelman

Construction



Efficiency Future Ready
Windy Peak OEL
HCM – Bryan

Construction



Efficiency Future Ready
Mount Evans OEL

HCM – GH Phipps

Construction



Efficiency Future Ready
Mount Evans OEL
HCM – GH Phipps

Construction



DW LED 2022

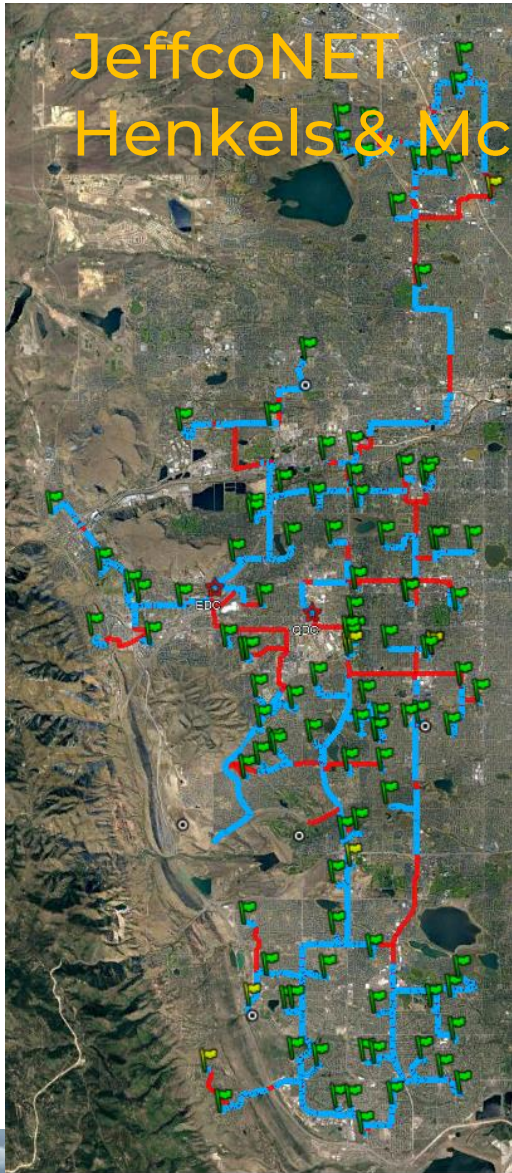
Ackerman – CMGC McKinstry

Construction Documents



1. Brady
2. Bradford North
3. Bradford South
4. Ute Meadows ES
5. Leawood ES
6. Normandy ES
7. Rooney Ranch ES
8. Creighton MS
9. Moore MS
10. Mandalay MS
11. Deer Creek MS
12. Lawrence
13. Weber ES
14. Meiklejohn
15. West Woods
16. Chatfield HS (Oct)
17. Dakota Ridge HS (Nov)

JeffcoNET Henkels & McCoy



Project Information

Project Start
April 29, 2020

Total Miles of conduit
to be bored 114

Miles installed
95 (83%)

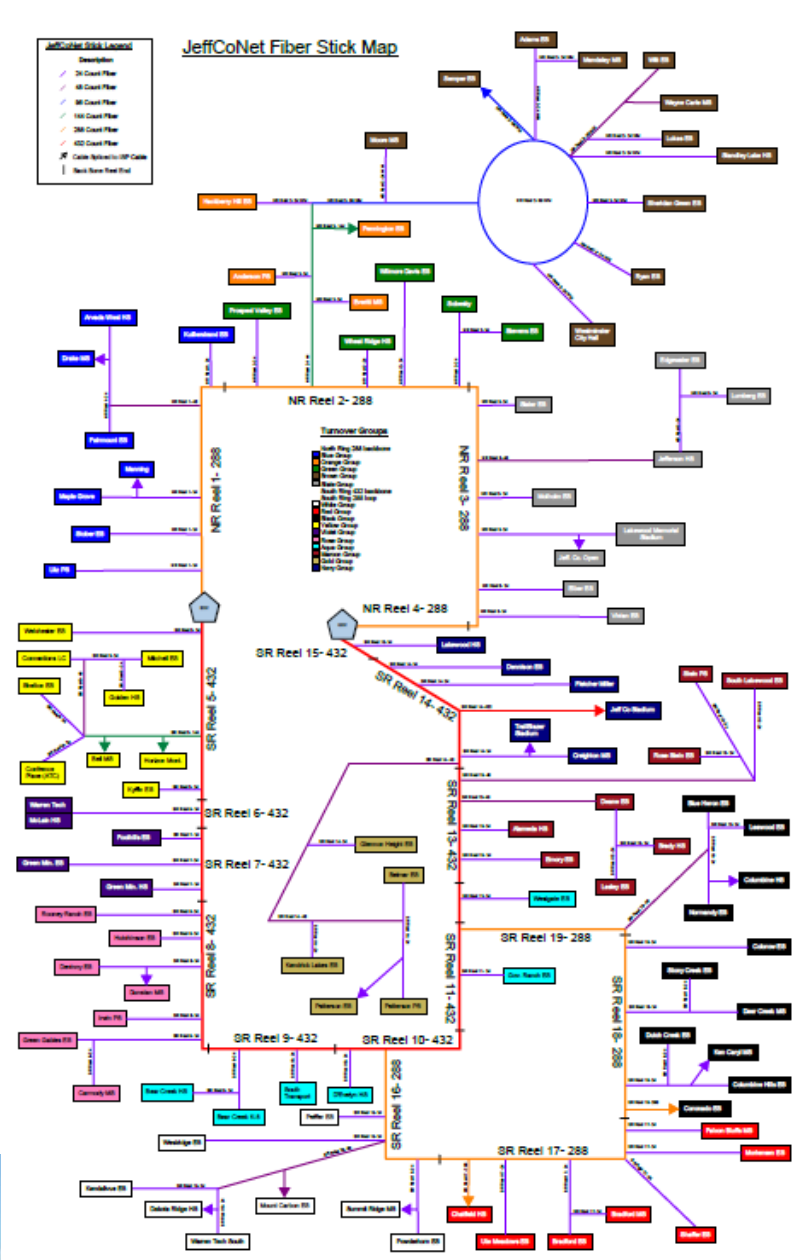
Fiber placed at
104 of 106 schools
(MDF to Street)

North Backbone turnover
to Jeffco Jan 2023

JeffCoNet Stick Legend

Description	
	20 Conduit Fiber
	40 Conduit Fiber
	80 Conduit Fiber
	160 Conduit Fiber
	320 Conduit Fiber
	640 Conduit Fiber
	Cable Network to SR Data
	Back Bone Trunk End

JeffCoNet Fiber Stick Map



2023 Efficiency Future Ready & DW projects

Ute Meadows ES – Efficiency Future Ready MOA – Crossland

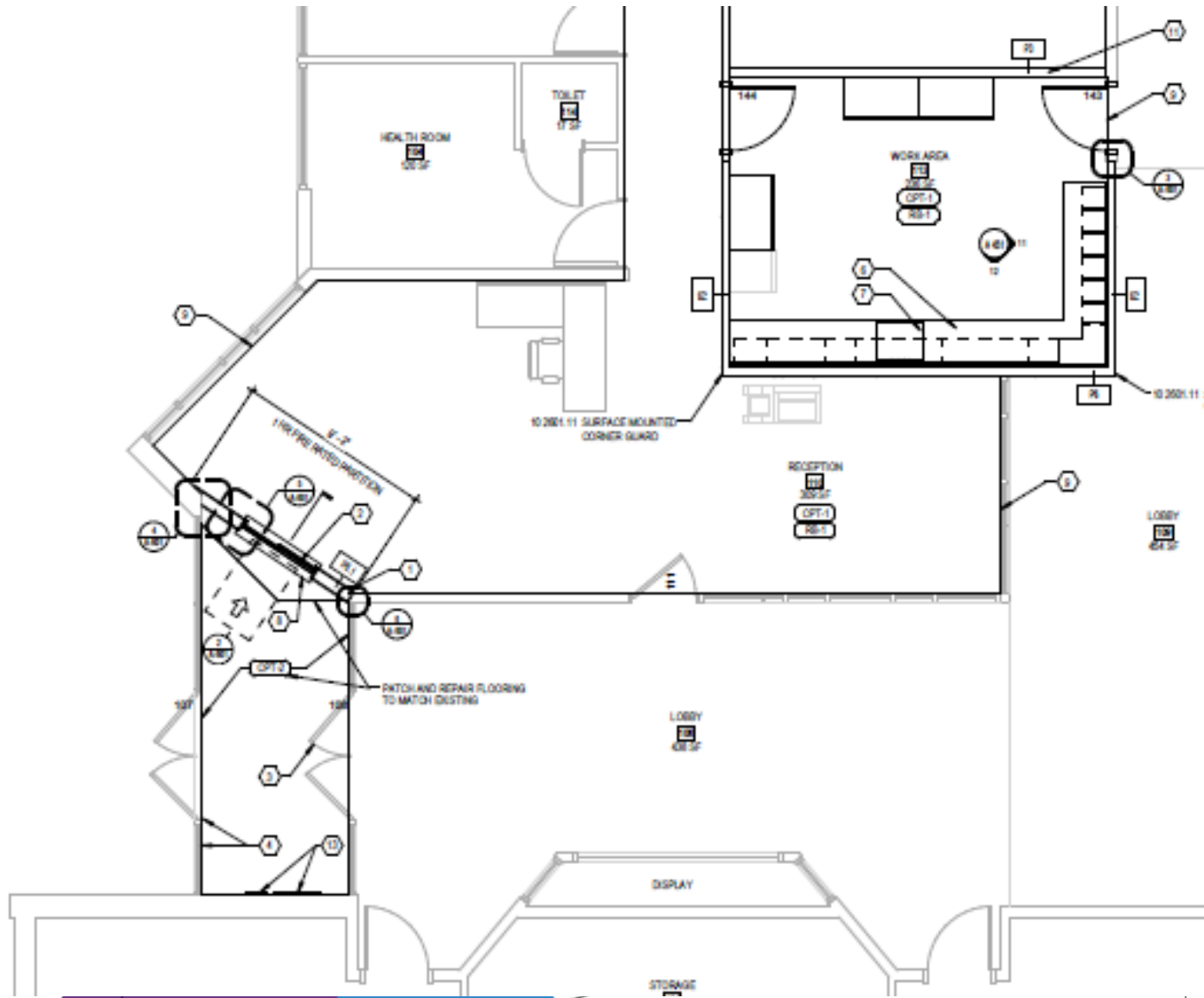
Bid 10/12/22

On 10/20 BOE
Consent Agenda

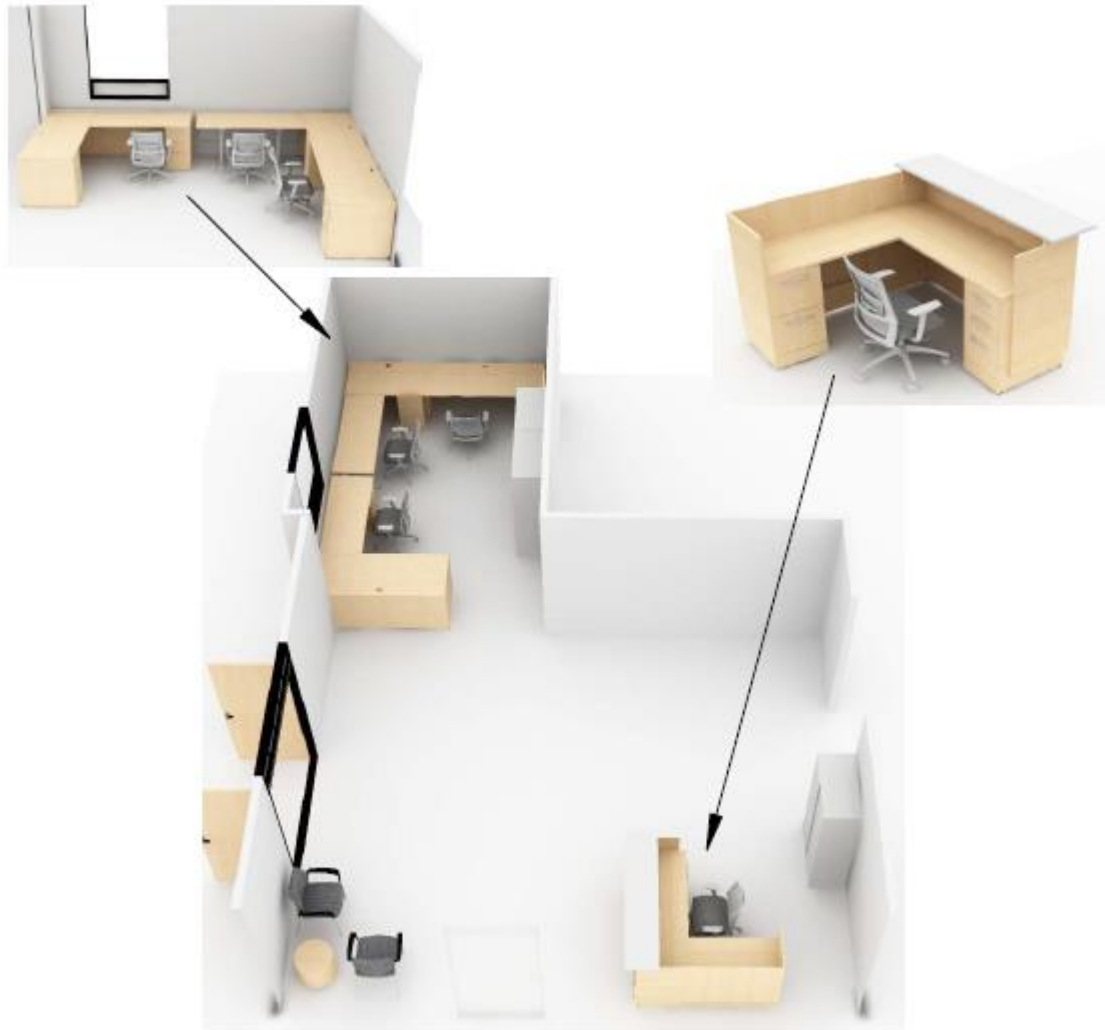
**Budget
\$607,477**

**Re-Bid
\$606,581**
Was \$1,869,739
last spring

**\$896 under
Budget**



Blue Heron ES – Efficiency Future Ready MOA – Crossland



Bid 10/12/22

On 10/20 BOE
Consent Agenda

Budget
\$384,562

Re-Bid
\$628,145
Was \$1,503,686
last spring

\$243,583
Over Budget

Mortensen ES – Efficiency Future Ready DLH – Crossland

Bid 10/12/22

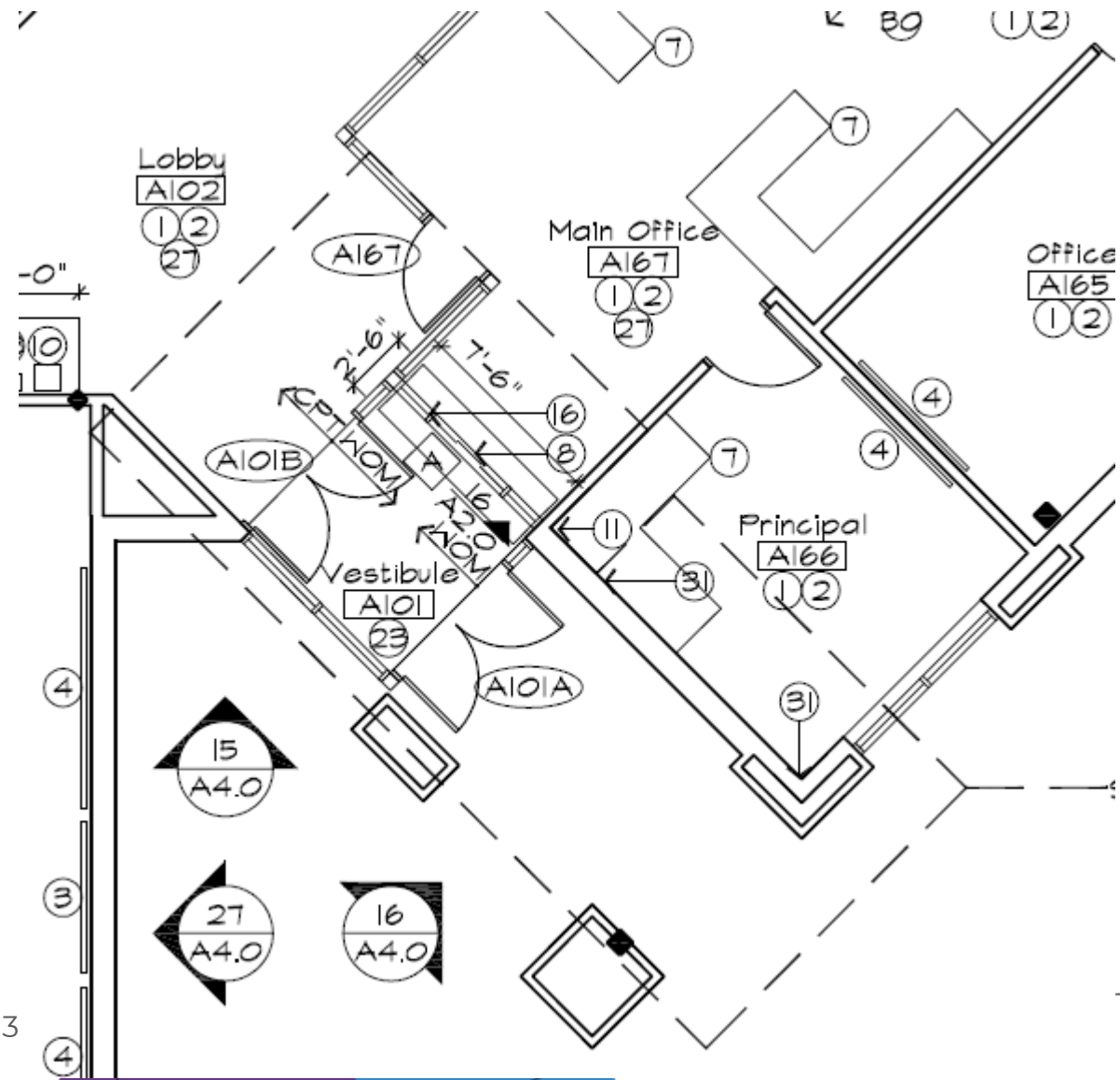
On 10/20 BOE
Consent Agenda

Budget
\$408,323

Re-Bid
\$840,810

No Bidders
last spring

\$432,487
Over Budget



Shaffer ES – Efficiency Future Ready DLH – Crossland

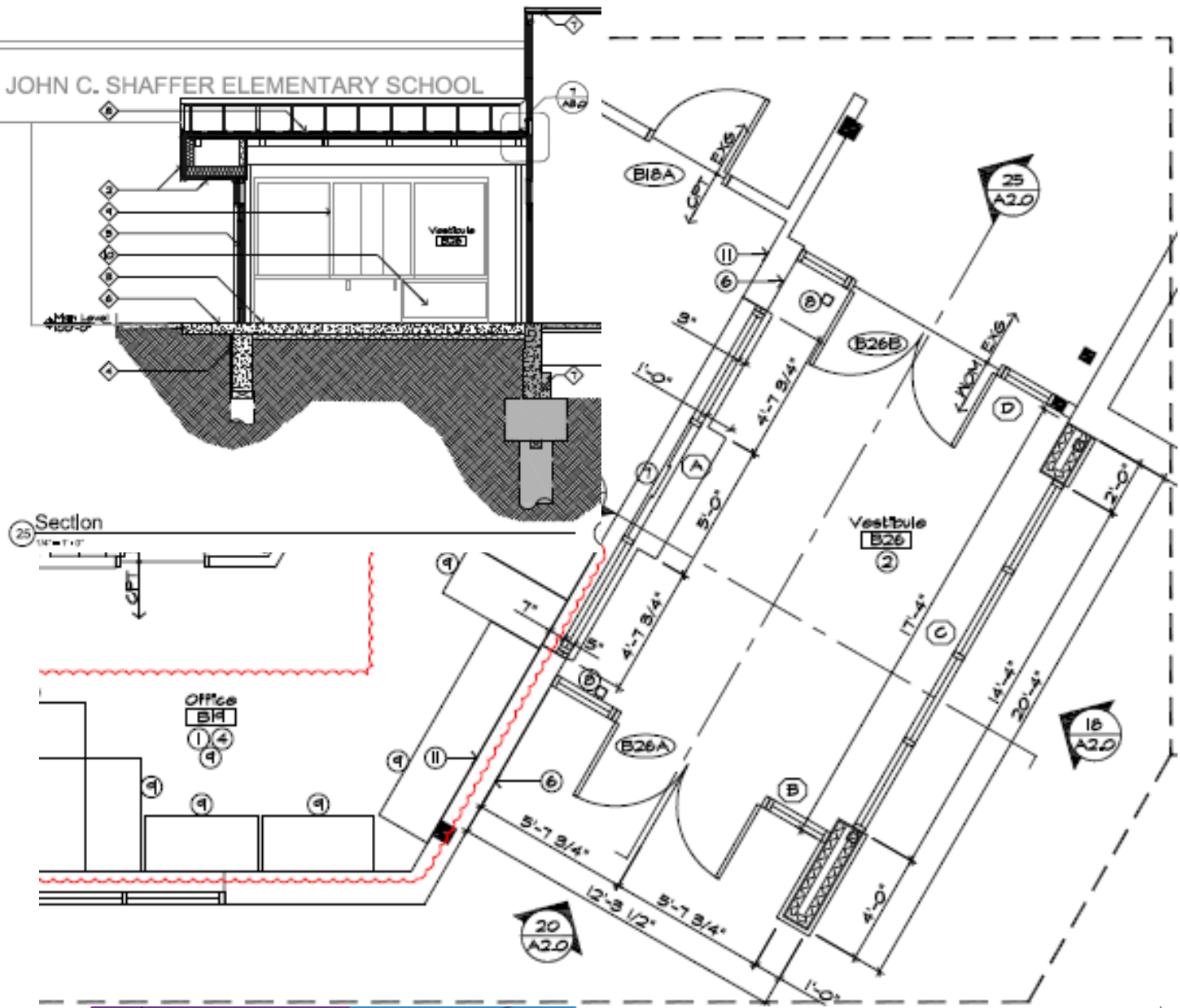
Bid 10/12/22
On 10/20 BOE
Consent Agenda

Budget
\$326,105

Re-Bid
\$790,942
No Bidders
last spring

\$464,837
Over Budget

Included is Alt #6 Secure
Entry
\$505,201



Wheat Ridge – Chiller

Eidos – Chiller Systems



Estimate
\$550,000
On 10/20 BOE
Consent Agenda

9/27/22 Bid
\$558,264

Over
Estimate
\$8,264

Wheat Ridge – Electrical SwitchGear

Ackerman Engineering – MV Powers



Estimate
\$325,000

7/7/22 Bid
\$265,300

Under
Estimate
\$59,700

Efficiency Future Ready Wheat Ridge HS

Bids
11/18/22

Eidos – TBD

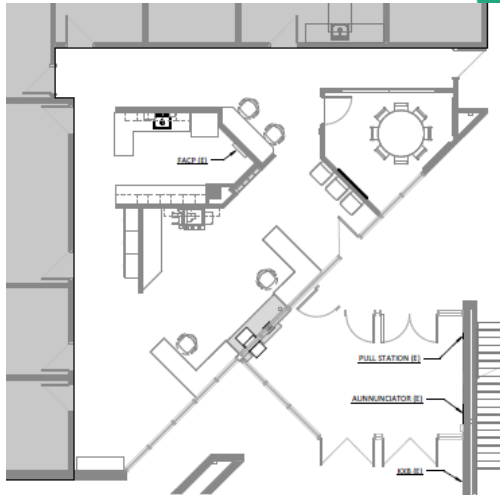
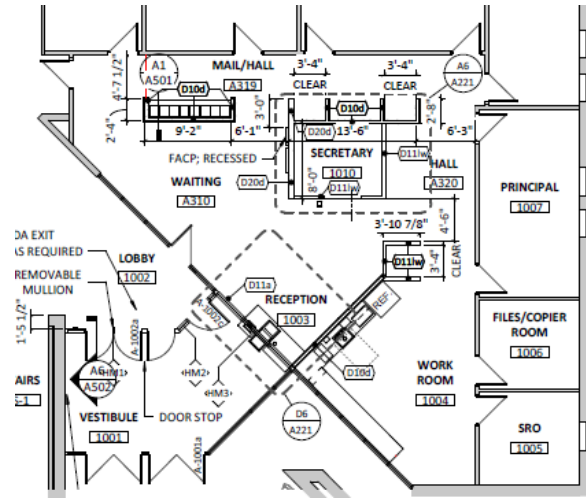
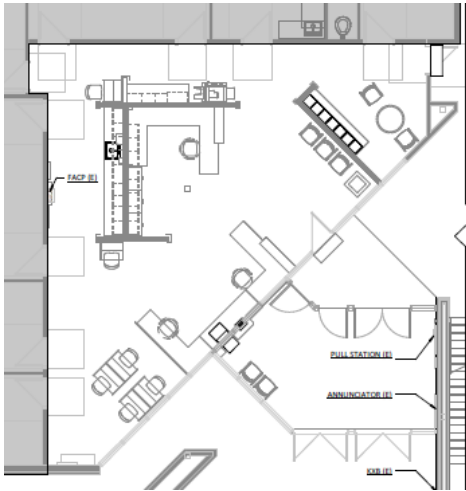


Deer Creek, Mandalay, & Moore MS

Efficiency Future Ready

RB+B – TBD

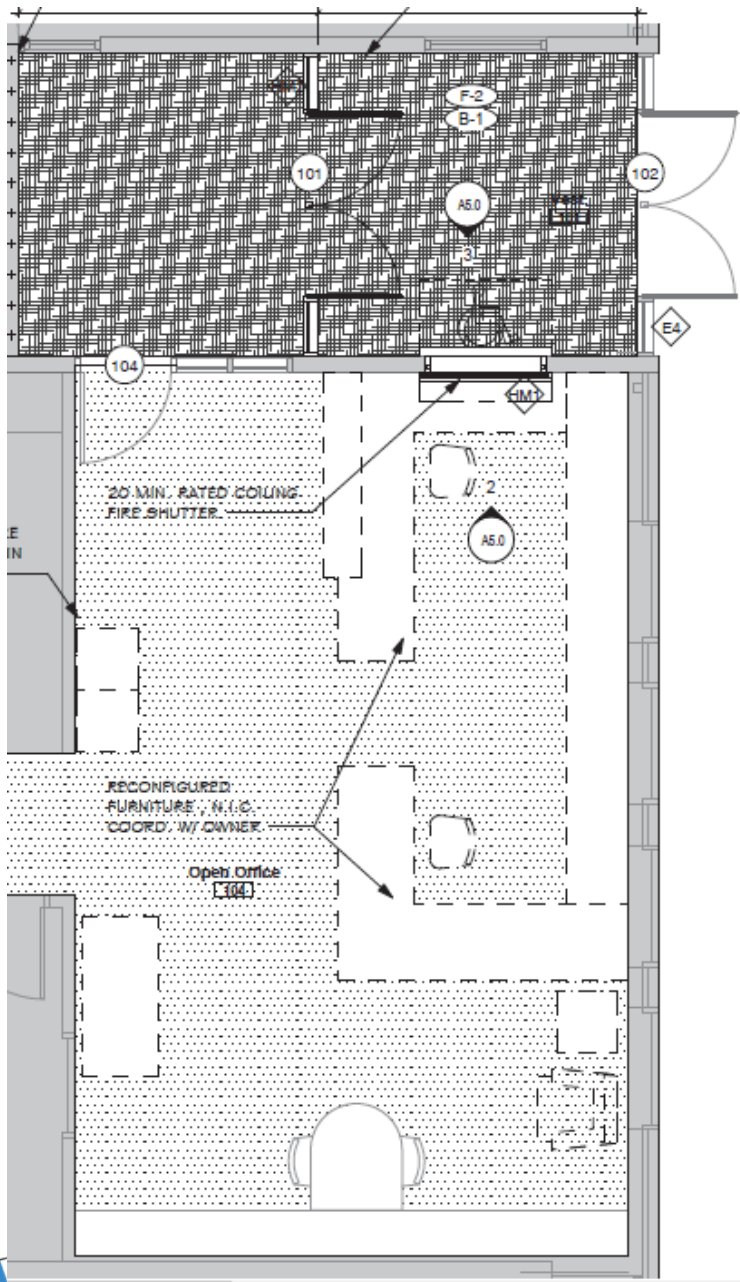
Bids
11/22/22



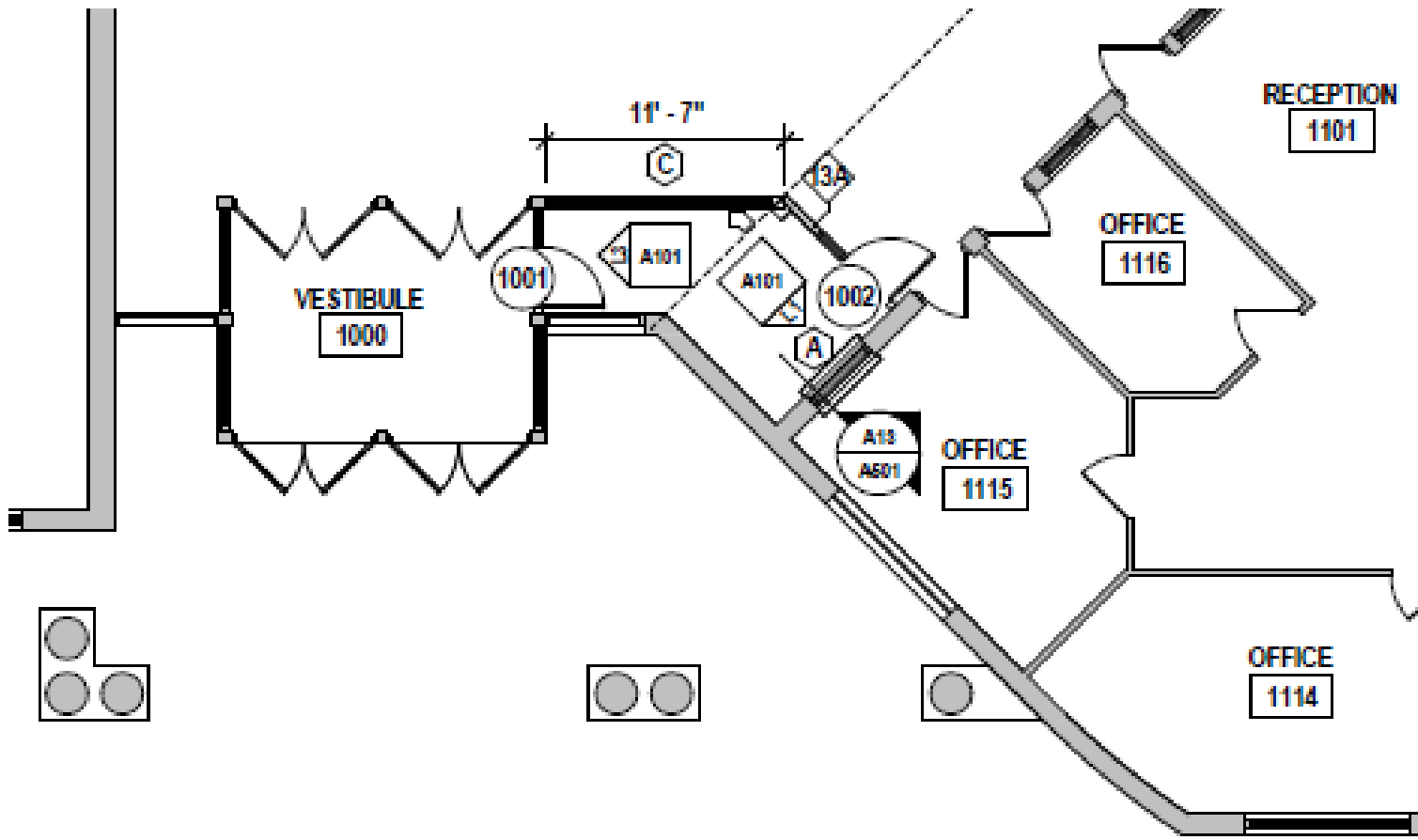
MAIN ENTRY VESTIBULE AND ADMIN SUITE RENOVATION. NO CHANGE TO FREE EGRESS.

Mt Carbon – Efficiency Future Ready Eidos – TBD

Bids
11/30/22

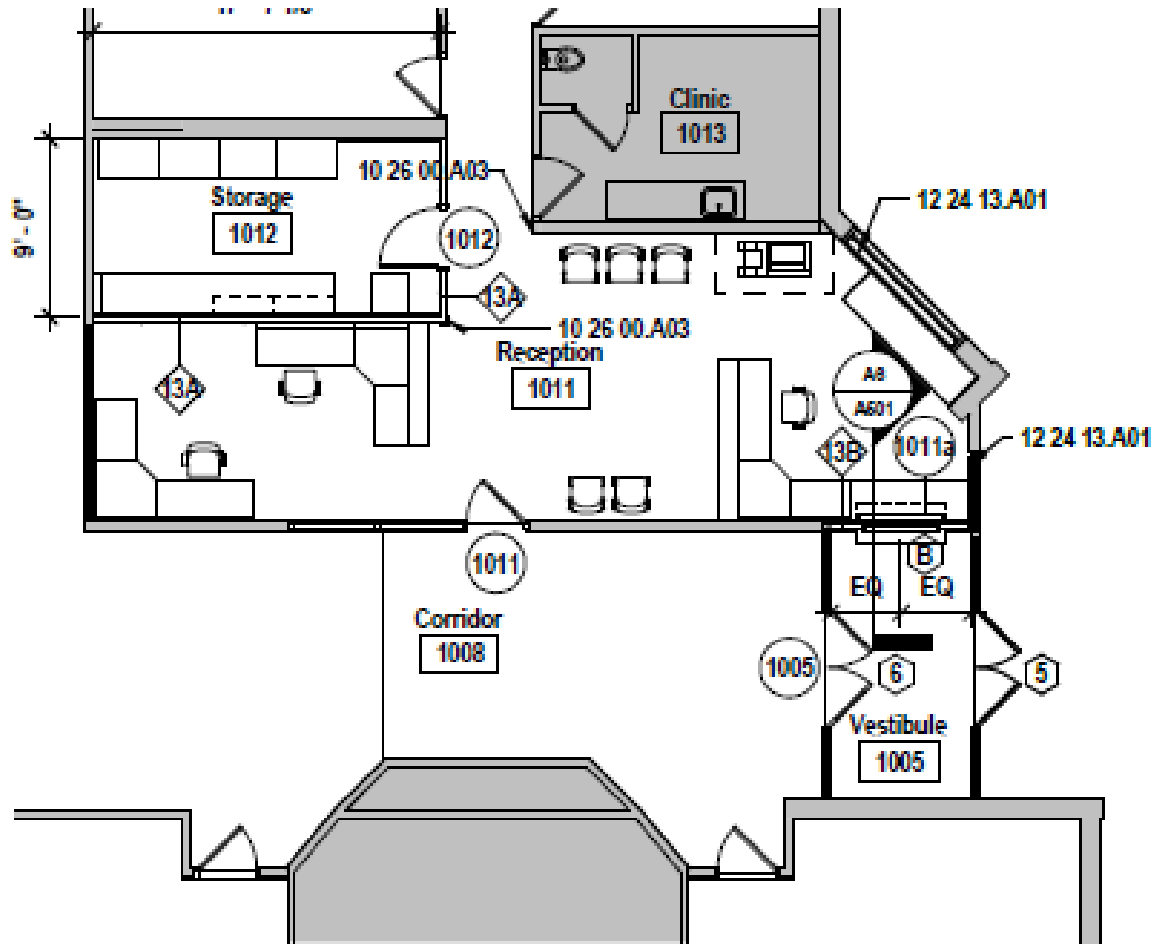


Summit Ridge MS – Efficiency Future Ready H&M – TBD



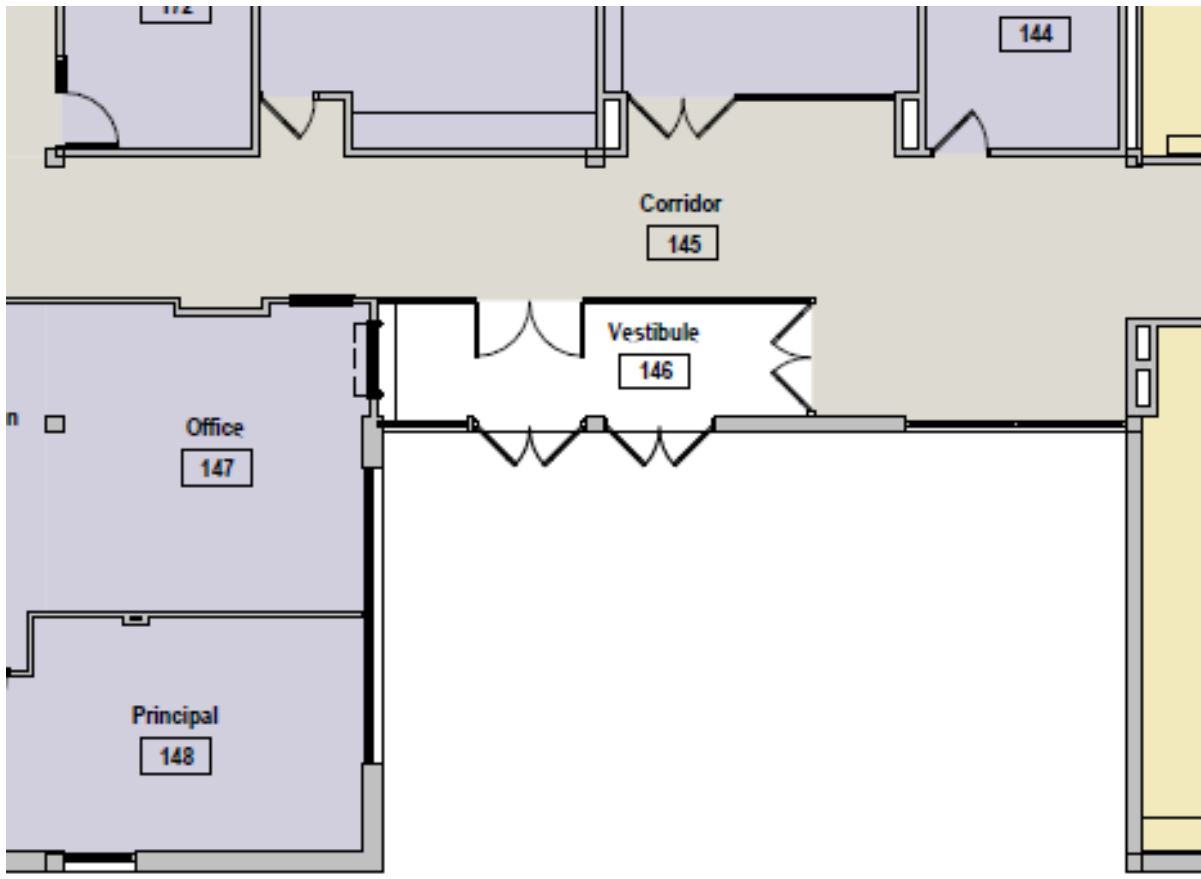
Kendallvue ES – Efficiency Future Ready H&M – TBD

CD



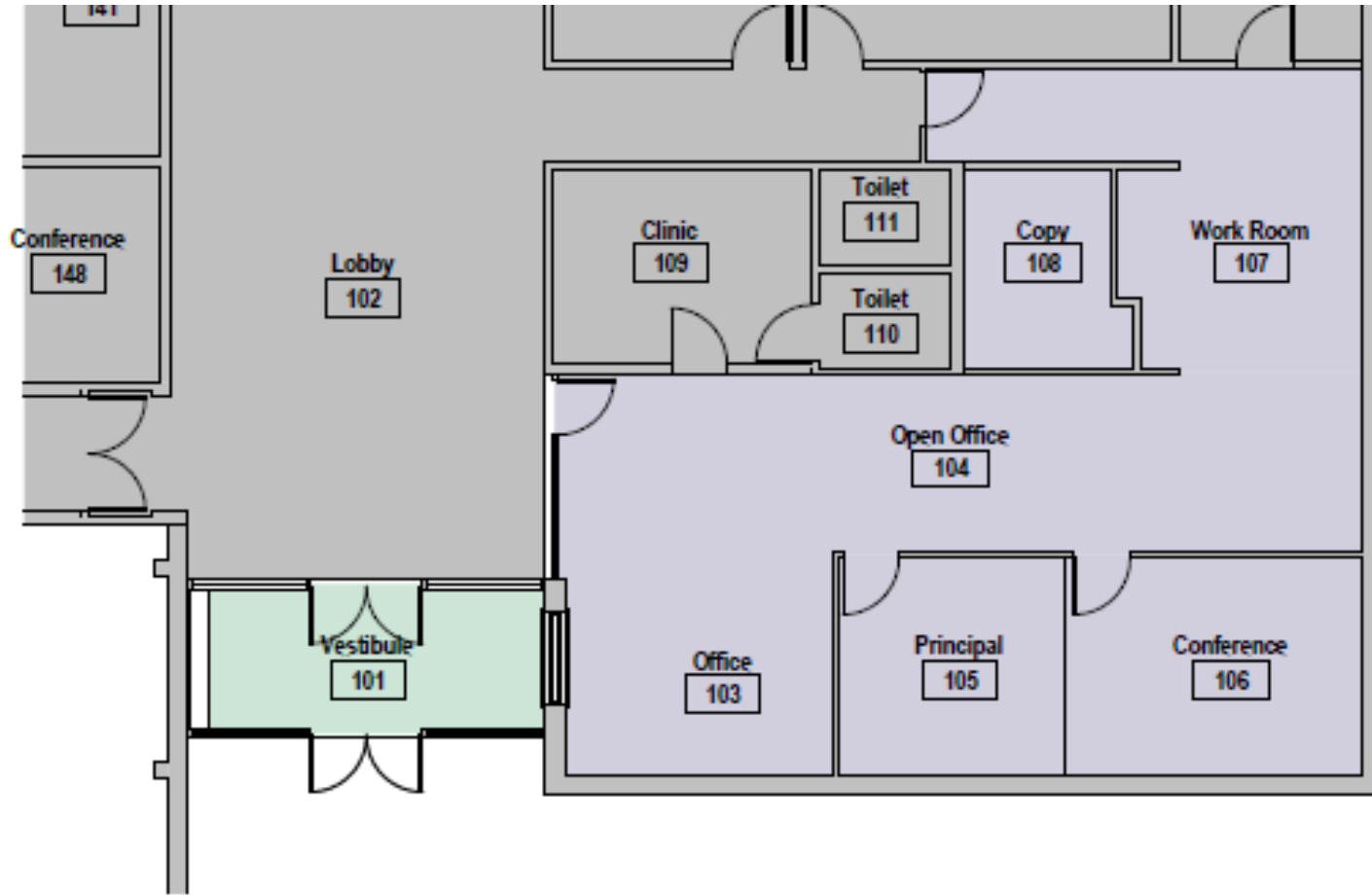
Swanson ES – Efficiency Future Ready H+M – TBD

DD

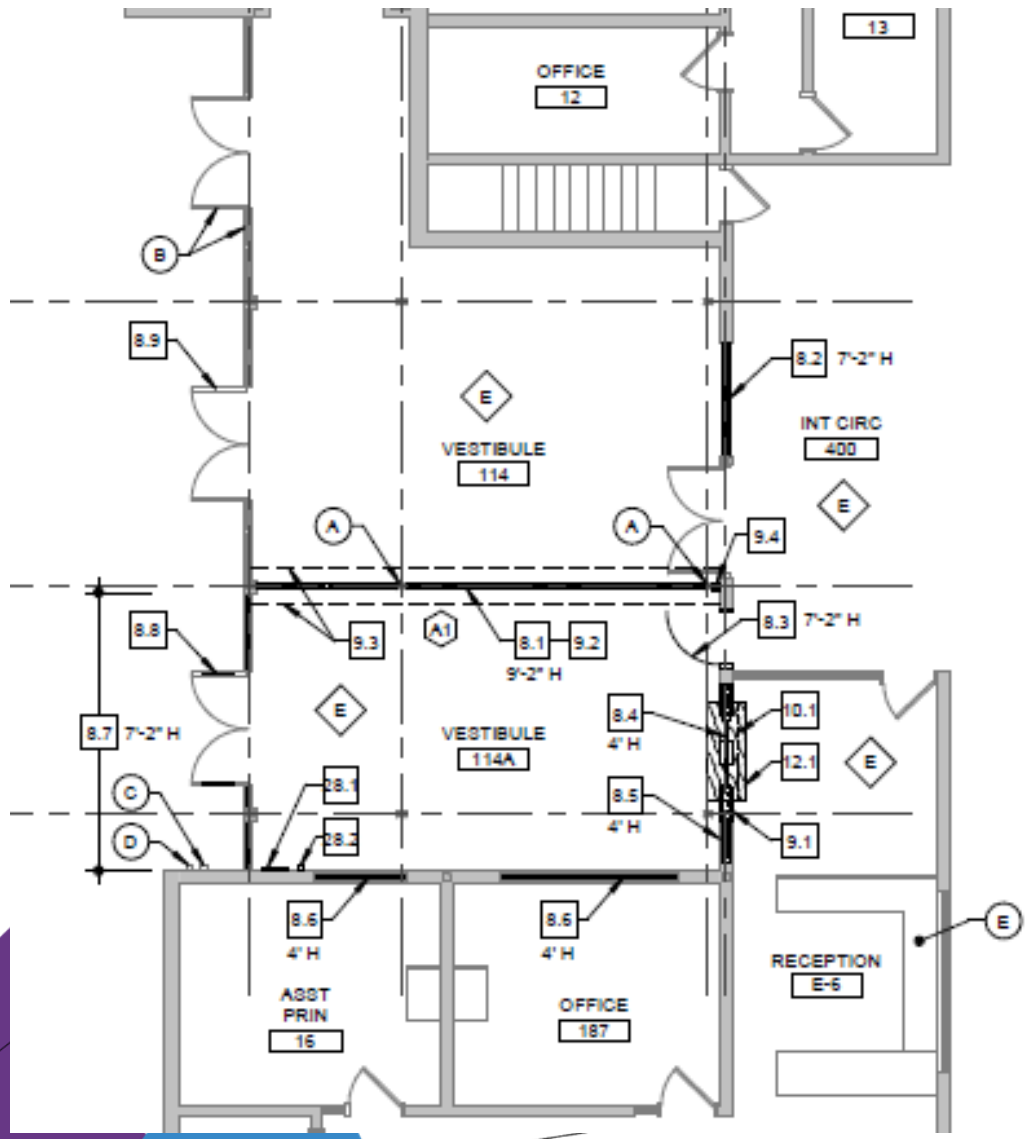


Van Arsdale ES – Efficiency Future Ready H+M – TBD

DD

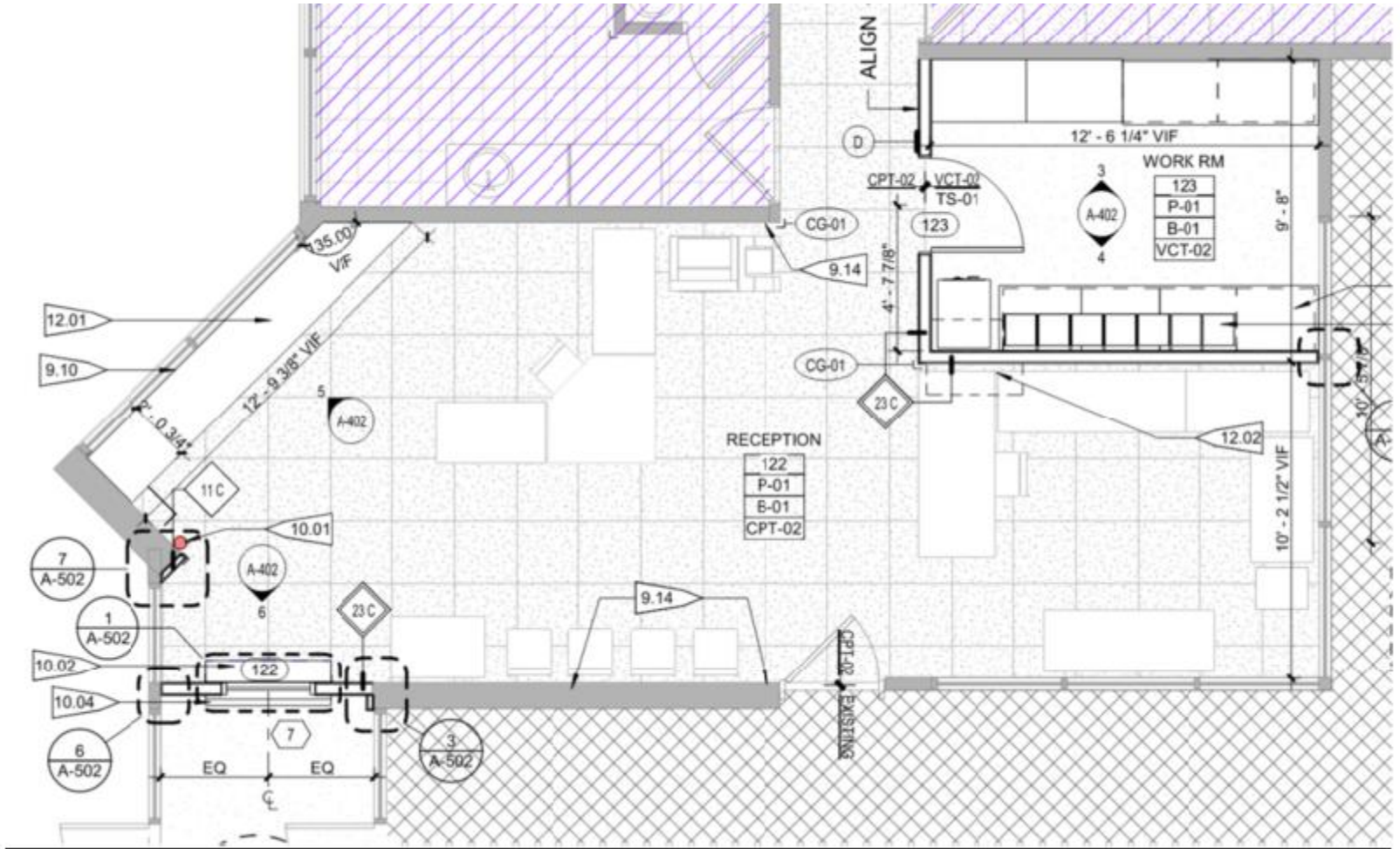


Oberon MS – Efficiency Future Ready Larson Incitti – TBD



Governors Ranch – Efficiency Future Ready MOA – TBD

DD



Bear Creek K8 – Efficiency Future Ready MOA – TBD

DD



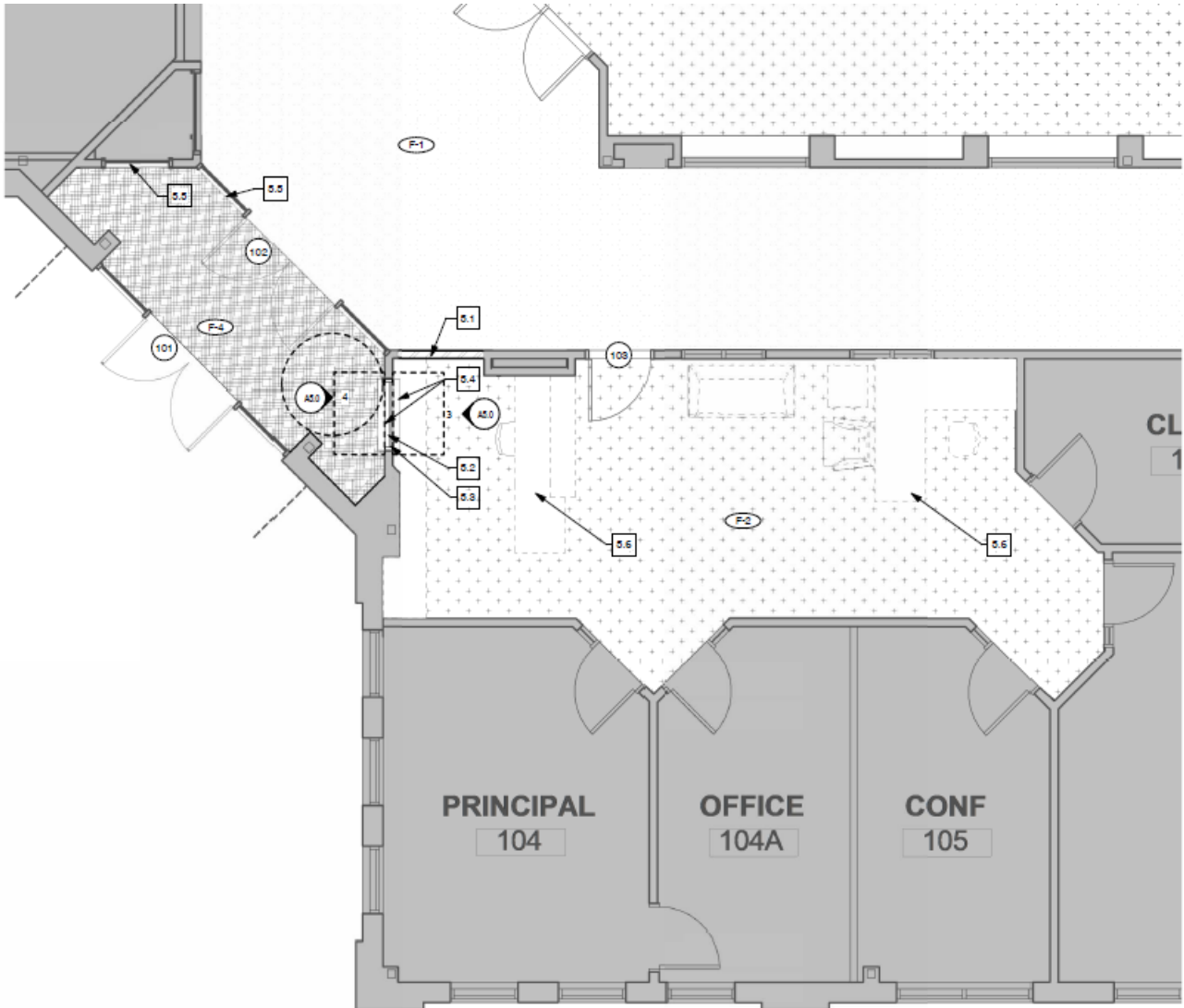
Falcon Bluffs MS – Efficiency Future Ready MOA – TBD

DD

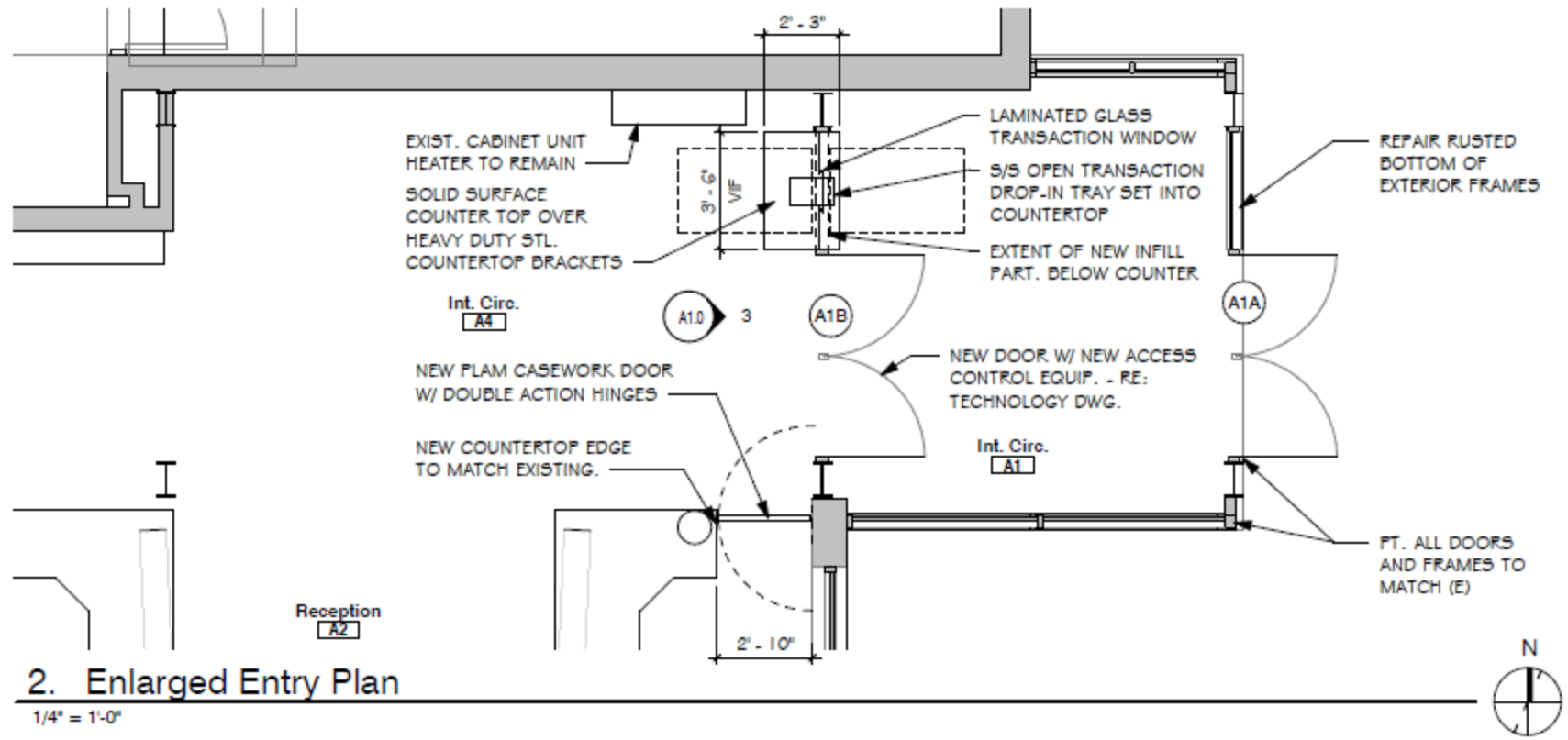


Sobesky Academy – Efficiency Future Ready Eidos – TBD

CD



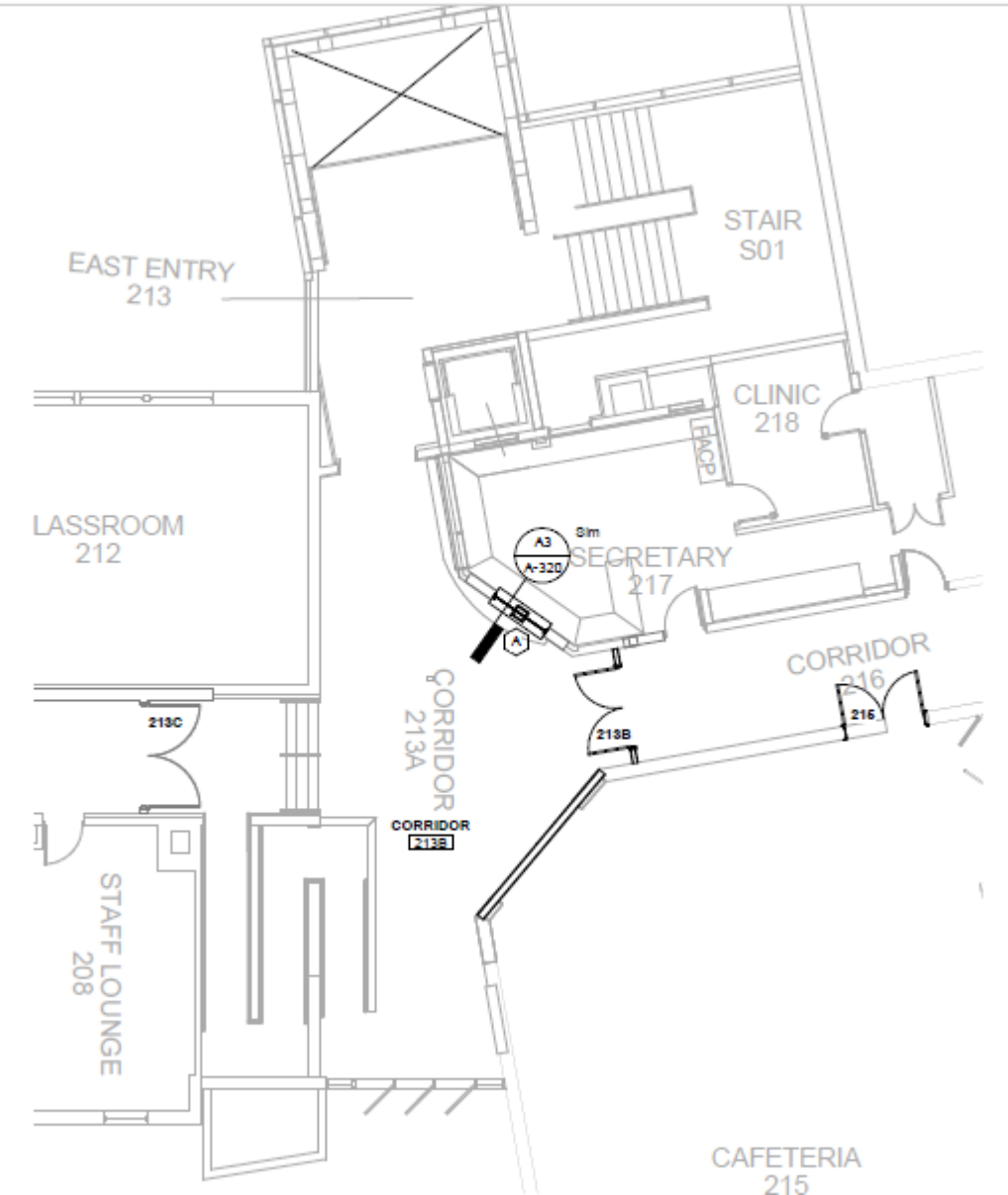
Pennington ES – Efficiency Future Ready Eidos – TBD



2. Enlarged Entry Plan

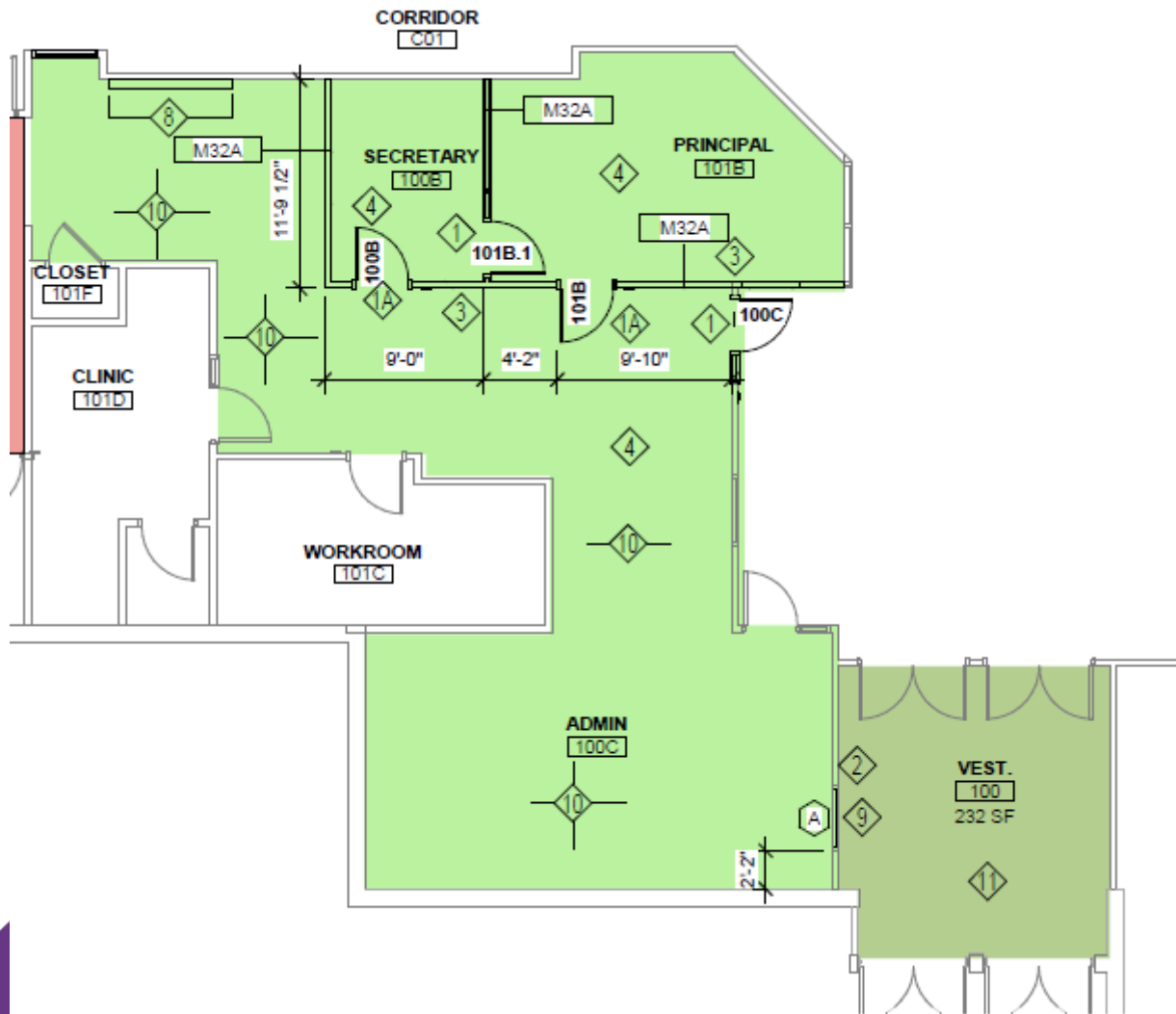
Edgewater ES – Efficiency Future Ready HCM – TBD

CD

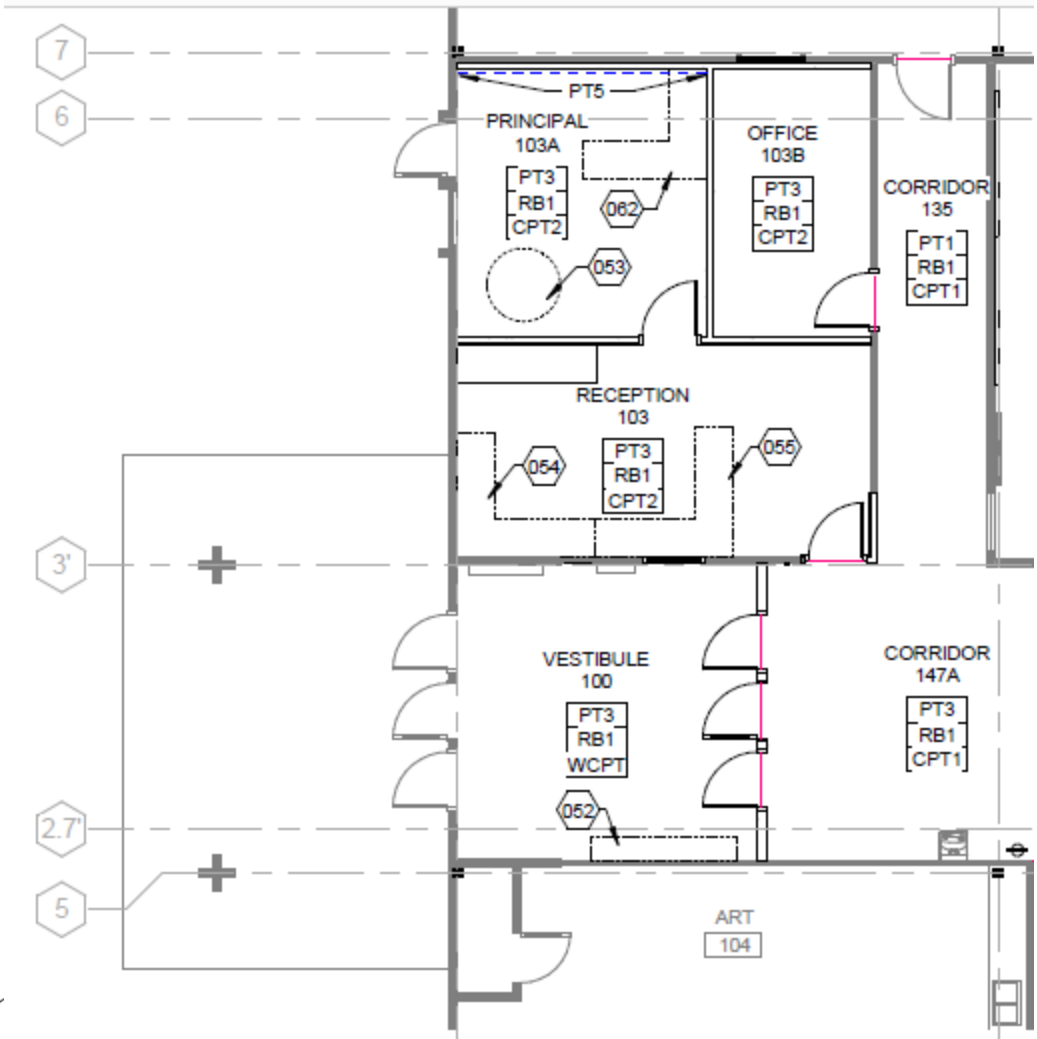


Ken Caryl MS – Efficiency Future Ready HCM – TBD

CD

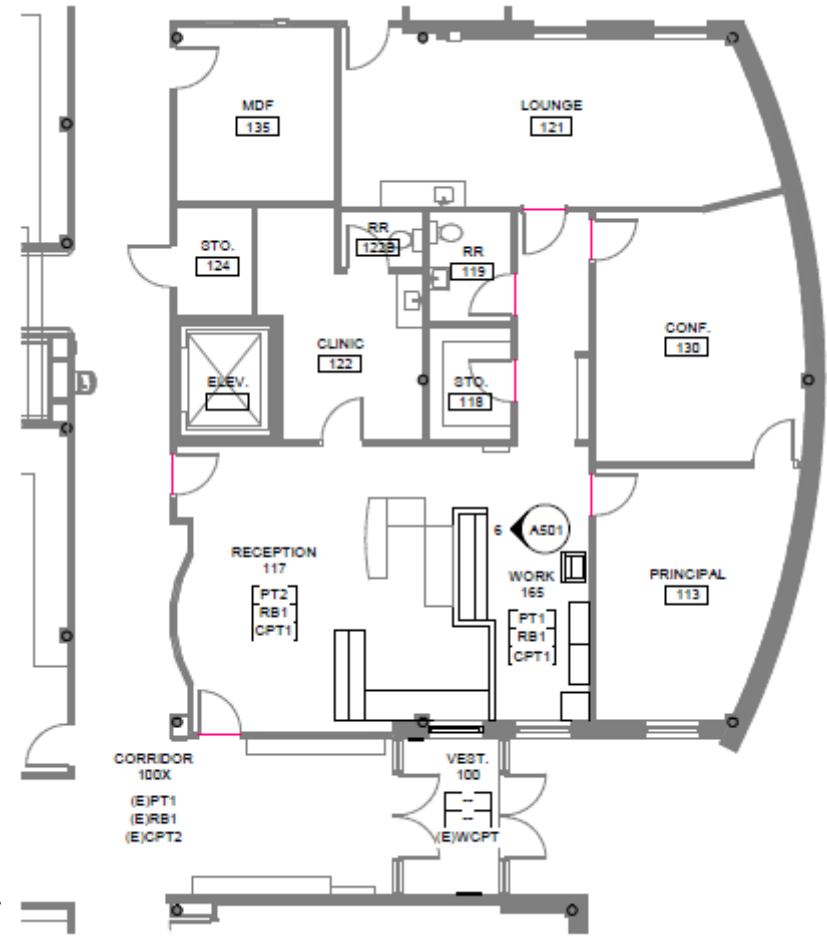


Little ES – Efficiency Future Ready Treanor HL – TBD



S Lakewood ES – Efficiency Future Ready Treasor HL – TBD

DD



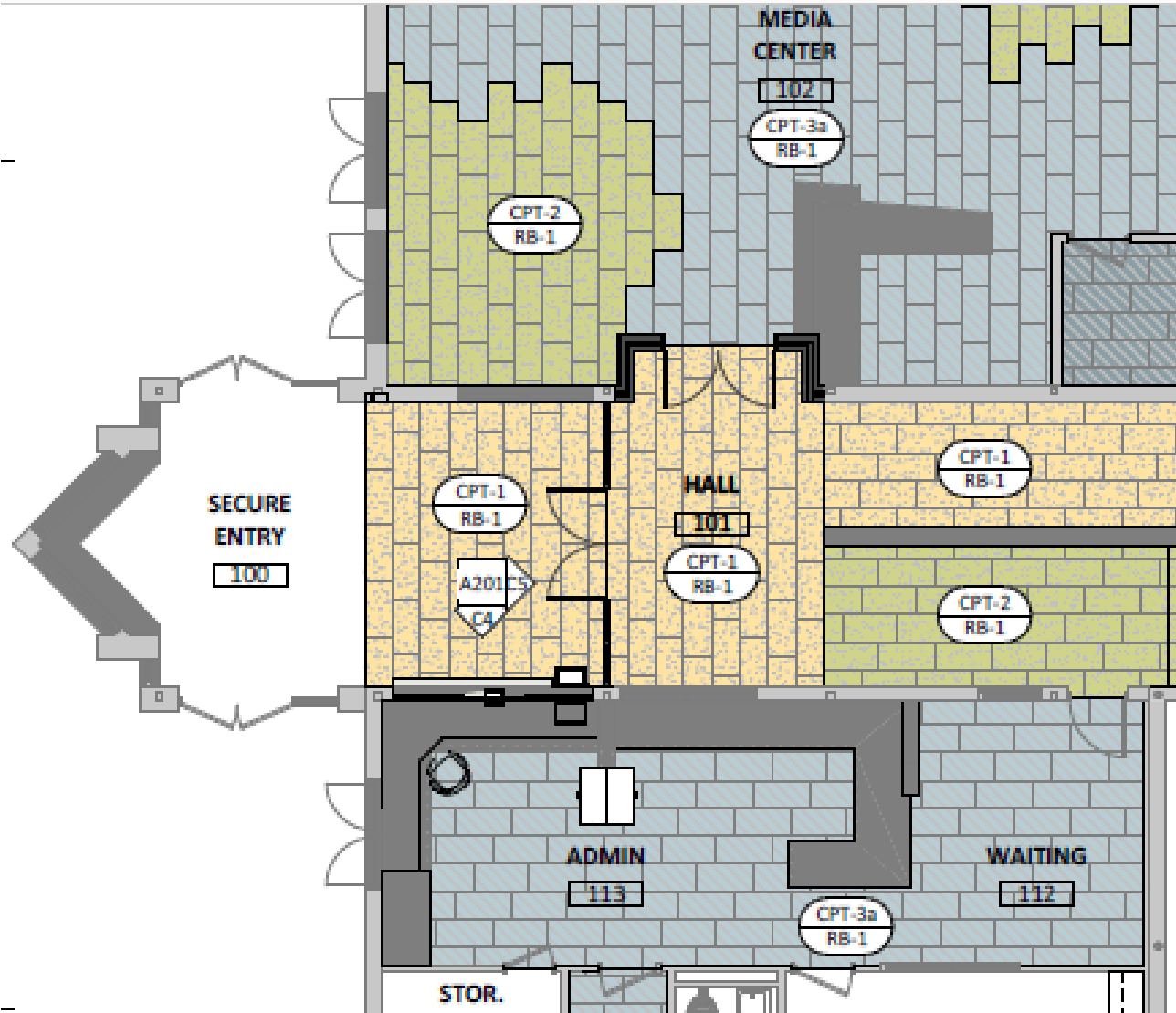
Connections – Efficiency Future Ready Treasurer HL – TBD

DD



Coal Creek K8 – Efficiency Future Ready RB+B – TBD

CD

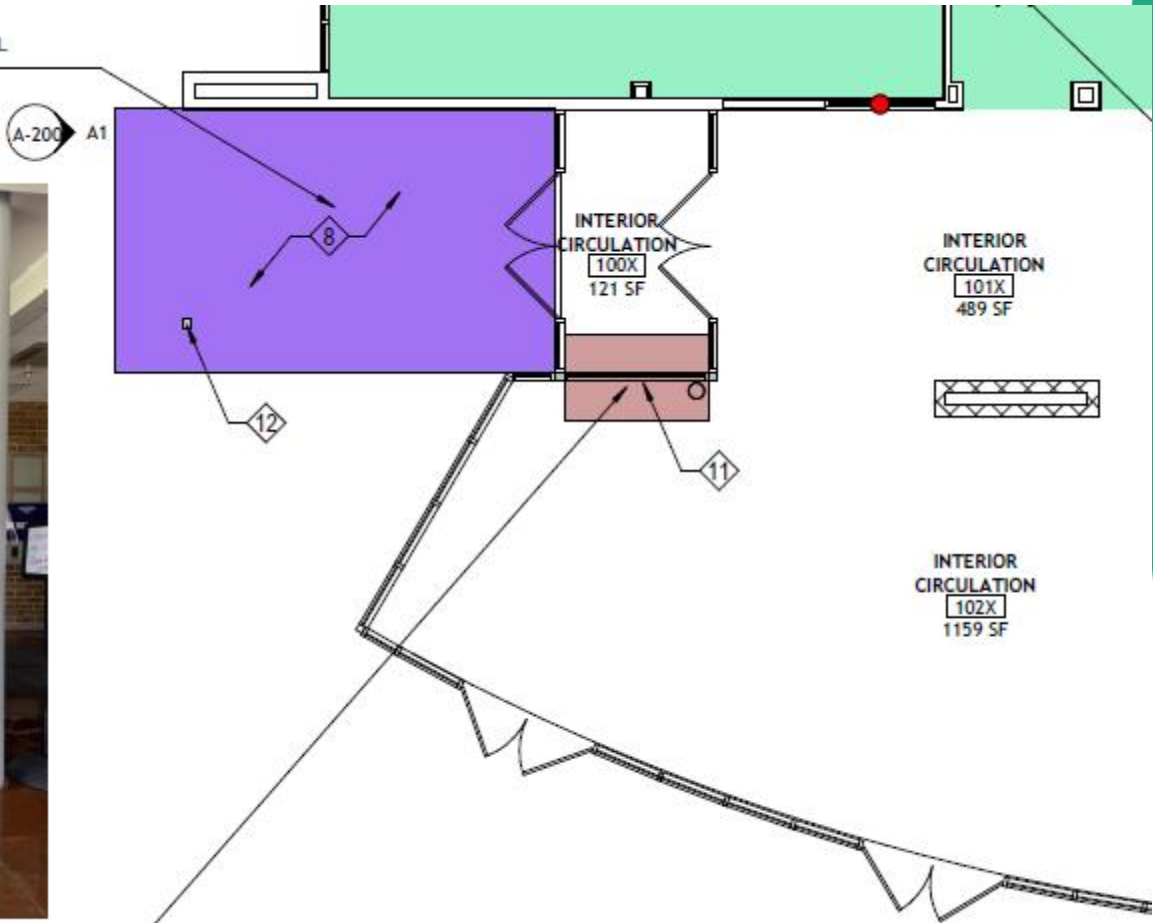


Warren Tech – Efficiency Future Ready HCM – TBD

MODIFY EXISTING CANOPY TO PROVIDE RECTANGULAR SHAPED CANOPY. ADD NEW STEEL COLUMN AT NEW CORNER OF CANOPY.

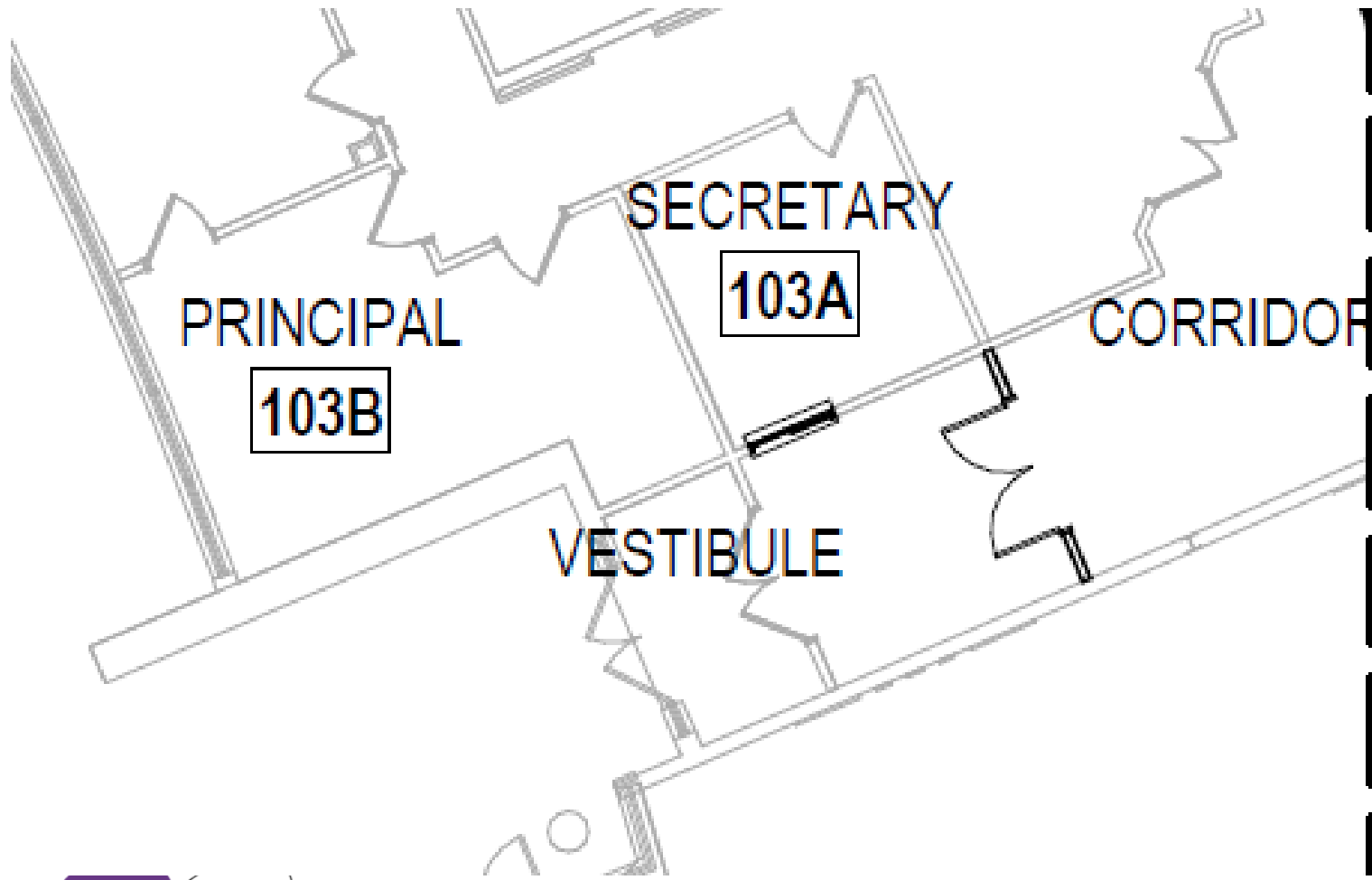


MODIFY EXISTING STOREFRONT AT INTERIOR VESTIBULE TO INSTALL NEW SECURITY TRANSACTION WINDOW



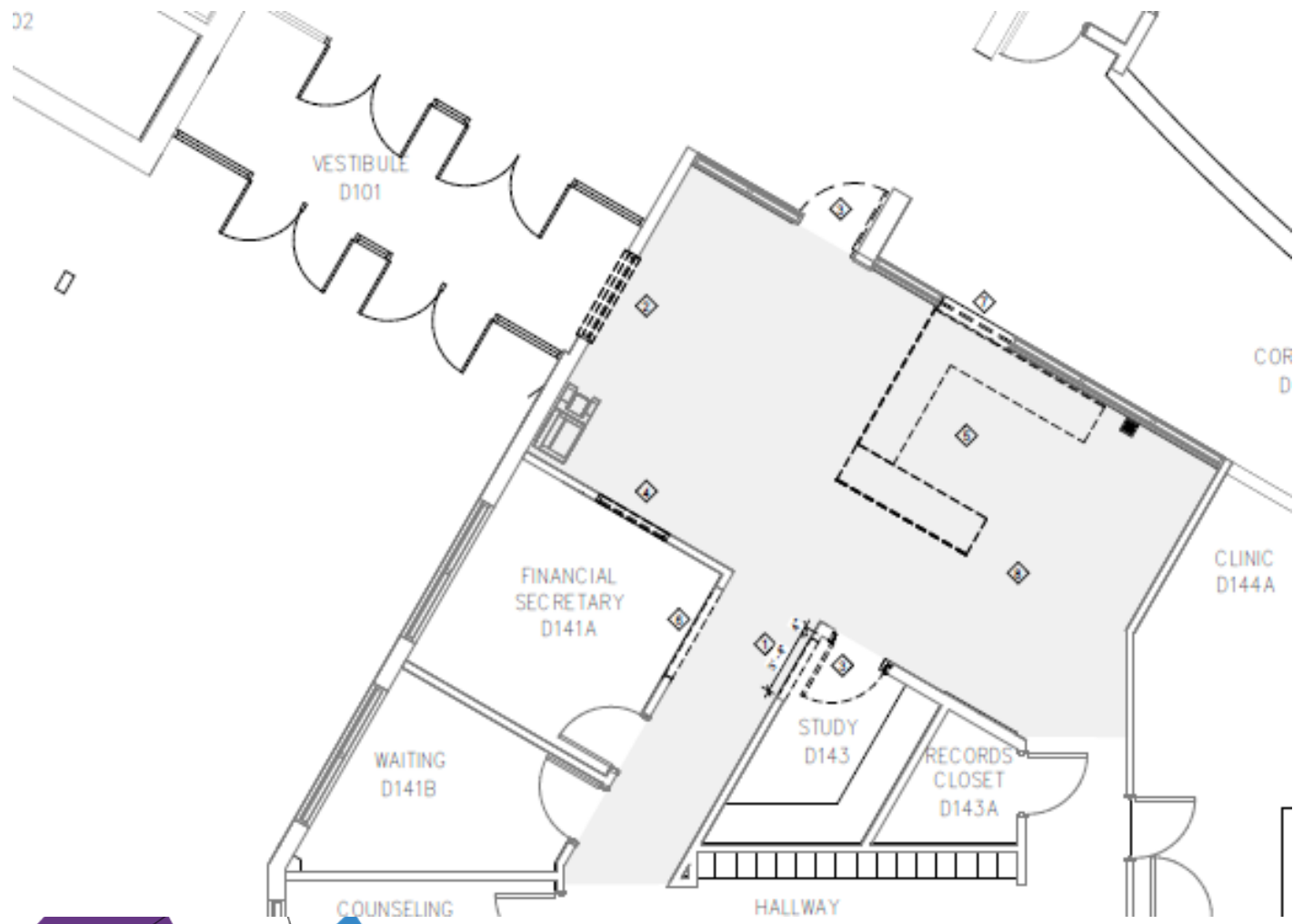
Drake MS – Efficiency Future Ready MOA – TBD

DD



Dunstan MS – Efficiency Future Ready HCM – TBD

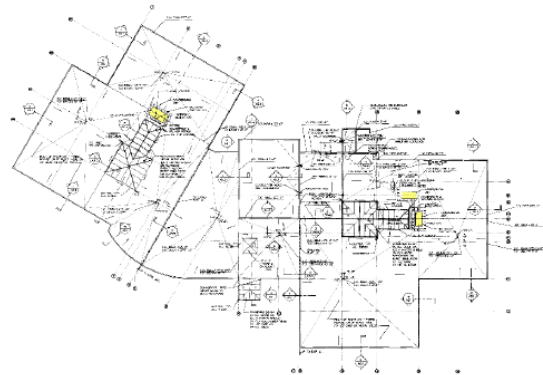
CD



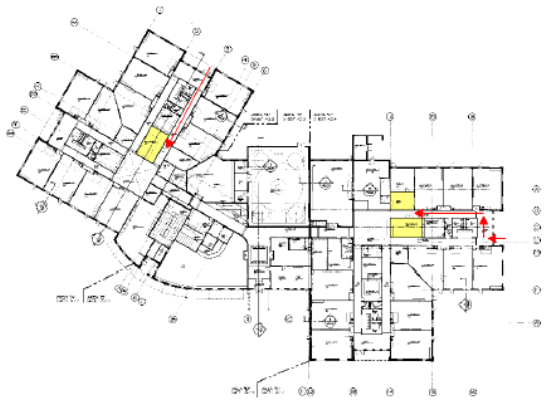
DW Mechanical 2023

West Woods ES (3-condensers, 3 –AHU's),
Bradford South (3-RTU's, Controls),
Sobesky (2-boilers)

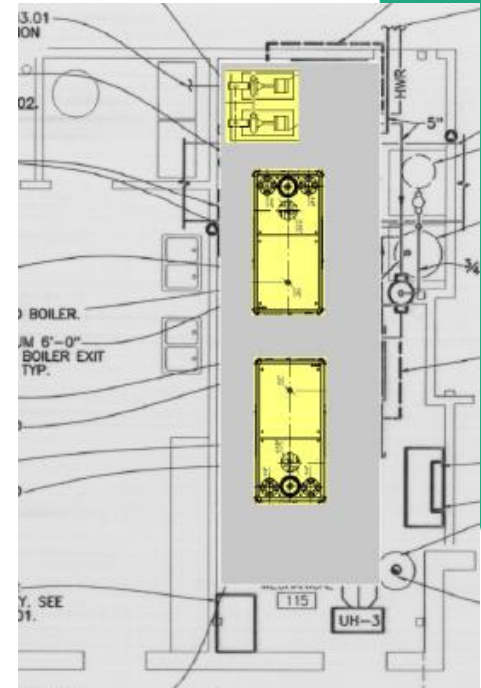
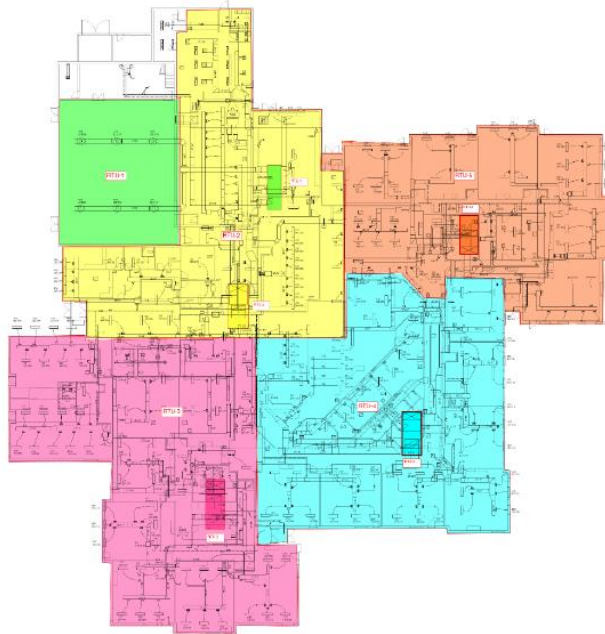
Columbine – CMGC Himmelman



ACCU locations

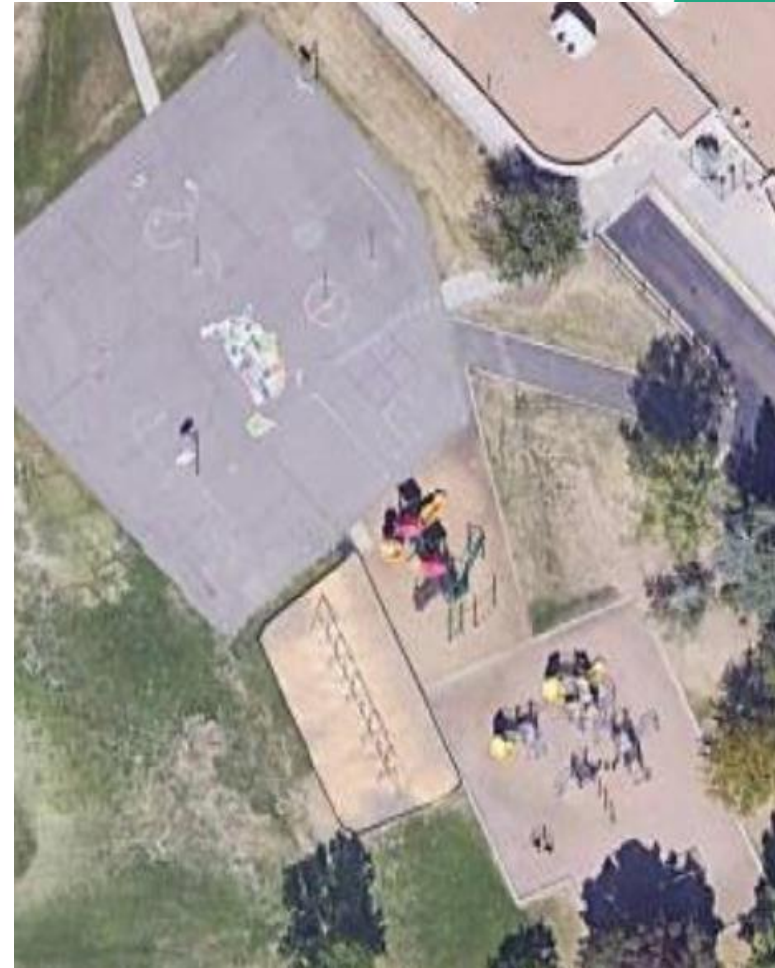
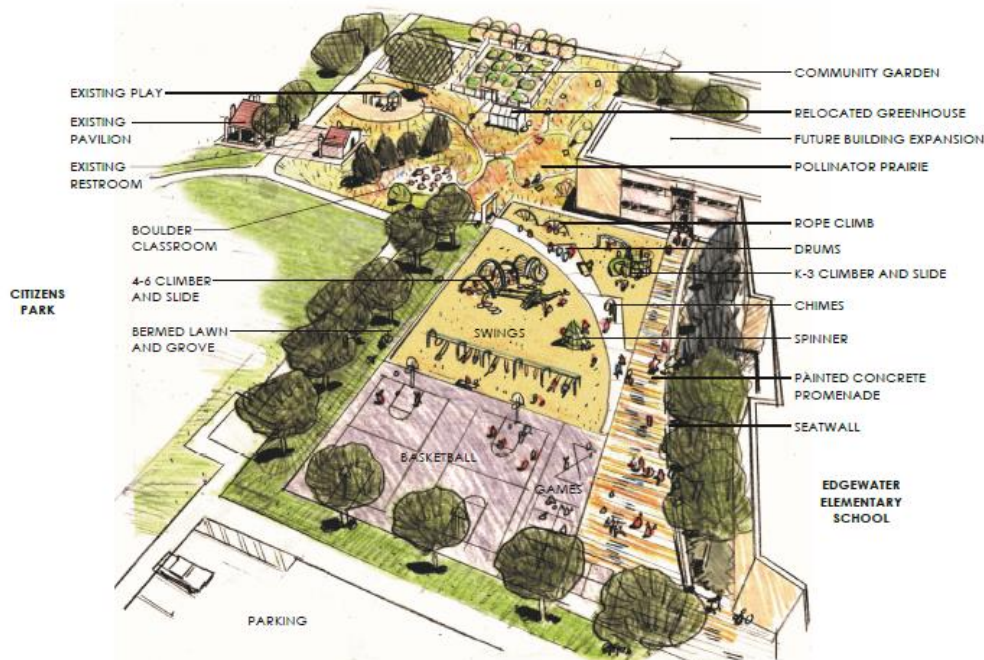


Proposed routing of new AHUs into school.



DW Playground 2023 Edgewater ES, Hutchinson ES

Design Concepts – TBD



School Closings & Consolidations

School Closings & Consolidations

Special Meeting-Study/Dialogue Session
Thursday, August 25, 2022

Schools Closing:

Bergen Meadow ES (2024) -----
Campbell ES (2024?) (ECE Center) -----
Colorow ES (2024) -----
Emory ES -----

Glennon Heights ES (2024) -----
Green Mountain ES -----
Kullerstrand ES -----
Molholm ES (2024) -----
Parr ES (2024) -----
Peiffer ES (2024) -----
Peck ES -----
Sheridan Green -----
Thomson ES -----
Vivian ES -----
Wilmore Davis ES -----
Witt ES -----

Consolidating To:

Bergen Valley ES (7CR Addition)
Vanderhoof & Fremont (Kitchen Work)
Powderhorn ES
Lasley ES (ADA, Office & Parking)
Stein ES (ADA upgrades)
Belmar ES
Foothills ES
Prospect Valley ES (8CR Addition)
Lumberg ES
Little ES (2023)
Kendallvue ES (2023) **(Add Kitchen Work)**
Secret ES
Ryan ES
Swanson ES (2023)
Stober ES (5CR Addition + Kitchen)
Stevens ES
Lukas ES (Kitchen Work Needed)

School Closings & Consolidations

Special Meeting-Study/Dialogue Session

Thursday, August 25, 2022

Prospect Valley ES (8CR Addition) MOA & Phipps CMGC



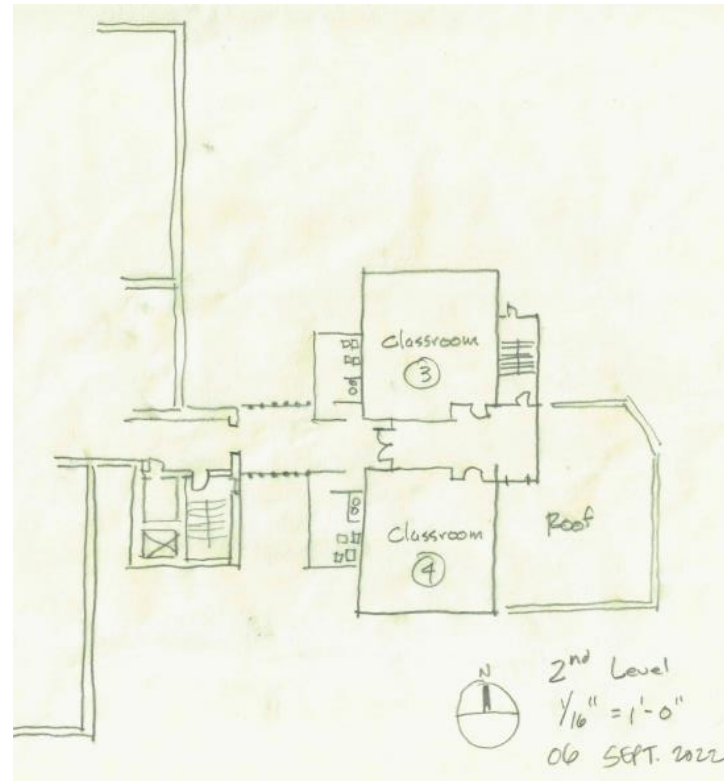
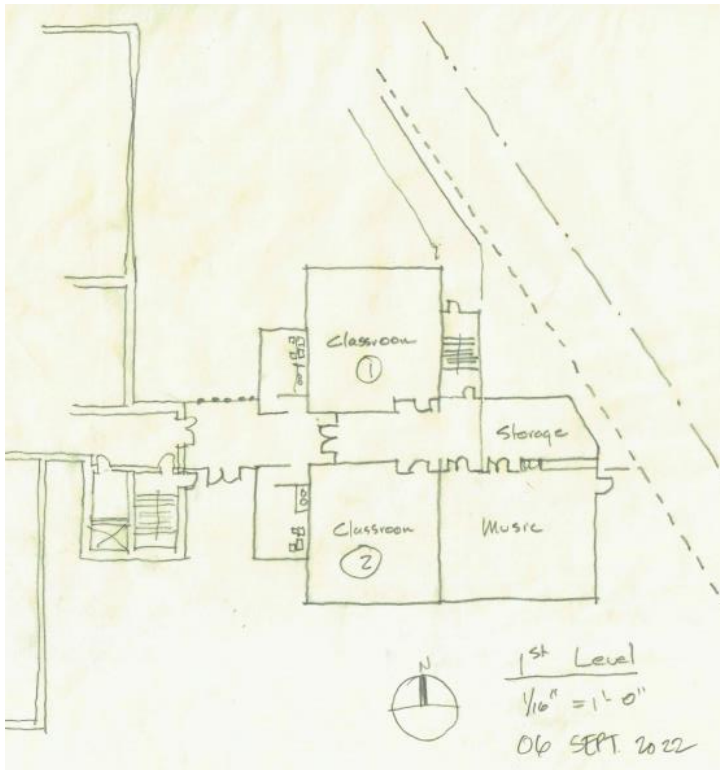
School Closings & Consolidations

Special Meeting-Study/Dialogue Session

Thursday, August 25, 2022

Stober ES

(5CR Addition + Kitchen) LOA & CMGC GTC

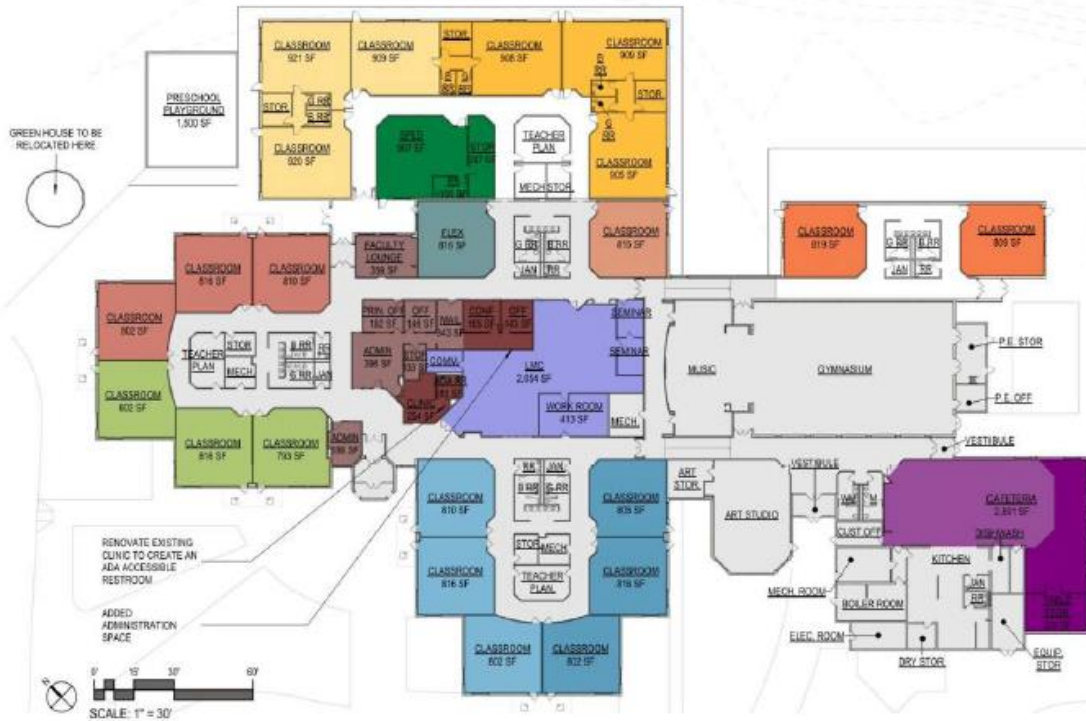
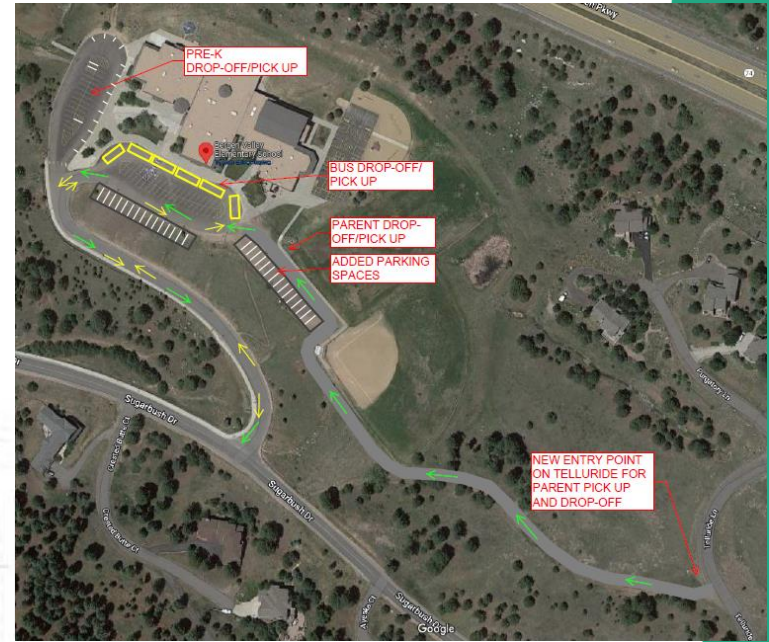


School Closings & Consolidations

Special Meeting-Study/Dialogue Session

Thursday, August 25, 2022

Bergen Valley ES (7CR Addition) EUA & GC TBD



ROOM DEPARTMENT LEGEND

- PRESCHOOL
- KINDERGARTEN
- 1ST GRADE
- 2ND GRADE
- 3RD GRADE
- 4TH GRADE
- 5TH GRADE
- SPED
- FLEX/MULTIPURPOSE
- ADMIN
- CAFETERIA
- LMC

MASTER PLAN



School Closings & Consolidations

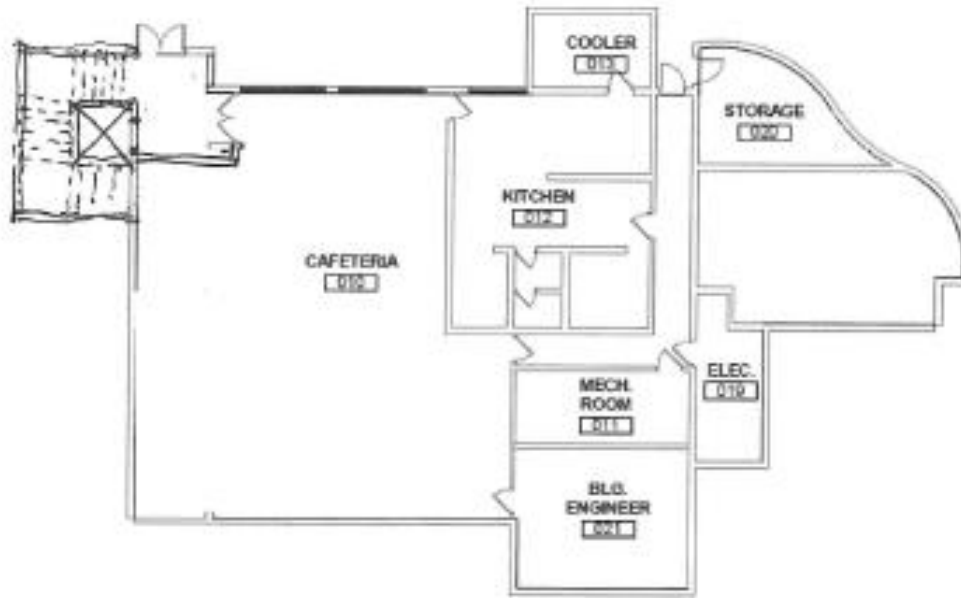
Special Meeting-Study/Dialogue Session

Thursday, August 25, 2022

Stein ES

(Elevator/Stair Addition)

HCM & CMGC Himmelman



A3 LOWER FLOOR PLAN
1/16" = 1'-0"

School Closings & Consolidations

Special Meeting-Study/Dialogue Session

Thursday, August 25, 2022

Lasley ES

(ADA Lifts / Toilet Rooms, Admin & Parking) H&M & CMGC Bryan



School Closings & Consolidations

Special Meeting-Study/Dialogue Session

Thursday, August 25, 2022

Campbell ES (ECE Center) Eidos & GC TBD



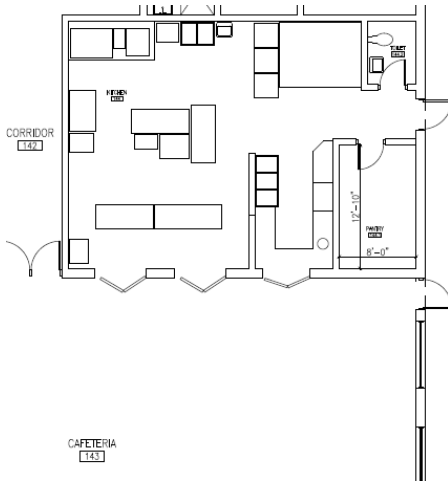
School Closings & Consolidations

Special Meeting-Study/Dialogue Session

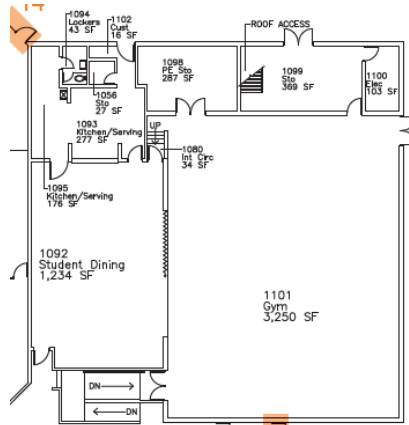
Thursday, August 25, 2022

Kitchen Improvements

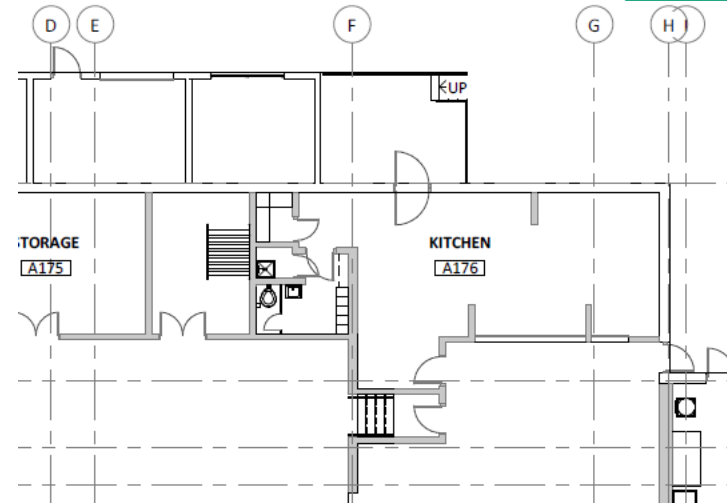
Fremont ES
(Wilmore Davis Re-design)
Eidos GC TBD



Kendallvue ES
H&M GC TBD
1,000 SF



Lukas ES
H&M GC TBD
1,000 SF



Program Verification & Feasibility Study – DLR Group

DAG #4
10/18/22

Fletcher Miller Special School \$16,000,000



Next Meeting 11/17/22